

fisherbrand

Vortex Mixers

Fixed Speed, Analog, Digital, Pulsing, Microplate,
Heavy-Duty Vortex Mixers & Multi-Tube Vortexers



Fixed Speed Vortex Mixer



Starts mixing when the cup head is pressed down. Speed is fixed at full rpm to provide vigorous vortexing of samples.

Operating Conditions:

Unit can operate in conditions from 4 to 40°C, 20% to 85% relative humidity, non-condensing.

Ordering Information:

Includes both cup head and 7.6 cm head with cover. 5 year limited warranty on parts and labor. Units are supplied with a 183 cm cord with Euro type plug and UK and CH adapters.

- >> Fixed high speed mixing
- >> Touch mode operation
- >> 5 year warranty

Specifications

Speed Range:	230V	2500 rpm
Orbit:		4.9 mm
Controls:		None
Duty Rating:		Intermittent Duty
Overall Dimensions (L x W x H):		20.2 x 12.1 x 12.7 cm
Ship Weight:		4.5 kg

Ordering Information

Description	Electrical	Cat. No.
Fisherbrand™ Fixed Speed Vortex Mixer	230V 0.6 amps 135 watts	15706969

Analog Vortex Mixer



Control allows low rpm start-up for gentle shaking or high speed mixing for vigorous vortexing of samples. Two modes of operation: “Continuous” mode when using accessory attachments or “Touch” mode which activates mixing when depressing the cup head.

Operating Conditions:

Unit can operate in conditions from 4 to 40°C, 20% to 85% relative humidity, non-condensing.

Ordering Information:

Includes both cup head and 7.6 cm head with cover. 5 year limited warranty on parts and labor. Units are supplied with a 183 cm cord with Euro type plug and UK and CH adapters.

- >> Variable, analog speed control
- >> Continuous or touch mode operation
- >> 5 year warranty

Specifications

Speed Range*:	230V	300 to 2500 rpm
Orbit:		4.9 mm
Controls:		Touch/Standby/On Rocker Switch Speed Knob: Variable 1 to 10 Dial Marks
Duty Rating:		Intermittent Duty
Overall Dimensions (L x W x H):		20.2 x 12.1 x 12.7 cm
Ship Weight:		4.5 kg

* Maximum speed will vary depending on accessory used.

Ordering Information

Description	Electrical	Cat. No.
Fisherbrand™ Analog Vortex Mixer	230V 0.6 amps 135 watts	15786959

Digital Vortex Mixers



Ideal for applications that demand repeatable results. Microprocessor control maintains set point for strong, consistent mixing action. Timer will display elapsed time or, when programmed to user defined time limit, the unit will shut off when the time reaches zero. Two modes of operation: “Continuous” mode when using accessory attachments or “Touch” mode which activates mixing when depressing the cup head.

Operating Conditions:

Unit can operate in conditions from 4 to 40°C, 20% to 85% relative humidity, non-condensing.

Ordering Information:

Includes both cup head and 7.6 cm head with cover. 5 year limited warranty on parts and labor. Units are supplied with a 183 cm cord with Euro type plug and UK and CH adapters.

- >> LED displays for speed and time
- >> Continuous or touch mode operation
- >> Microprocessor controls
- >> 5 year warranty

Specifications		
Speed Range*:	230V	500 to 2500 rpm
Timer:	1 second to 160 hours	
Orbit:	4.9 mm	
Controls:	Touch/Standby/On Rocker Switch, LED Displays for Speed and Time, Up/Down Buttons for Set-Point Control	
Duty Rating:	Intermittent Duty	
Overall Dimensions (L x W x H):	20.2 x 12.1 x 12.7cm	
Ship Weight:	4.5 kg	

* Maximum speed will vary depending on accessory used.

Ordering Information

Description	Electrical	Cat. No.
Fisherbrand™ Digital Vortex Mixer	230V 0.6 amps 135 watts	15796959

Pulsing Vortex Mixers



Powerful pulsing vortex action produces excellent cell disruption for glass bead procedures. Microprocessor controlled. Capable of complete cell disruption of samples in only minutes. Unique pulsing action reduces heat generation while providing more effective mixing and disruption. Timer will display elapsed time or, when programmed to user defined time limit, the unit will shut off when the time reaches zero.

Operating Conditions:

Unit can operate in conditions from 4 to 40°C, 20% to 85% relative humidity, non-condensing.

Ordering Information:

Includes cup head, 7.6 cm head with cover and an easy-to-load 1.5 mL to 2 mL Micro-Tube Holder. Holder has a built-in cup head. 5 year limited warranty on parts and labor. Units are supplied with a 183 cm cord with Euro type plug and UK and CH adapters.

- >> LED displays for speed and time
- >> Continuous or touch mode operation
- >> Glass bead cell disruption/homogenization
- >> 5 year warranty

Specifications

Speed Range*:	230V	500 to 2500 rpm
Timer:	1 second to 160 hours	
Orbit:	2.5 mm	
Controls:	Touch/Standby/On Rocker Switch, LED Displays for Speed and Time, Up/Down Buttons for Set-Point Control, Pulse Button	
Duty Rating:	Intermittent Duty	
Overall Dimensions (L x W x H):	20.2 x 12.1 x 12.7cm	
Ship Weight:	4.5 kg	

* Maximum speed will vary depending on accessory used.

Ordering Information

Description	Electrical	Cat. No.
Fisherbrand™ Pulsing Vortex Mixer	230V 0.6 amps 135 watts	15716969

Vortex Mixer Accessories



Single Tube Holder Part

Mounts to the top of vortex mixers for single tube, hands free mixing. Easily attaches to the top of any vortex mixer without the use of tools. Patent Pending.

Single Tube Holder	15776959
0.5 mL Micro-Tube Holder*	15746959
1.5 mL - 2 mL Tube Holder*	15756959

* For use with Single Tube Holder

Accessory Kits



Tube Holder Kit with Retainer

Includes: (1) 9-13 mm Tube Holder
(1) 14-19 mm Tube Holder
(1) 20-25 mm Tube Holder
(1) Flat Foam Insert
(2) Vessel Harnesses
(1) Insert Retainer

Description Part

Tube Holder Kit with Retainer	15756939
-------------------------------	----------



Micro-Tube and Micro-Well Plate Holder Kit with Retainer

Includes: (1) Micro-Tube Holder
(1) Micro-Well Plate Holder
(1) Insert Retainer

Description Part

Micro-Tube and Micro-Well Plate Holder Kit with Retainer	15726949
--	----------

Replacement Parts

Description Part

Insert Retainer	15766939
Vessel Harness (2 pk)	15786939
9-13 mm Tube Holder (2 pk)	15796939
14-19 mm Tube Holder (2 pk)	15706949
20-25 mm Tube Holder (2 pk)	15716949
Micro-Tube Holder (2 pk)	15736949
Micro-Well Plate Holder (2 pk)	15746949
Flat Foam Insert (2 pk)	15786949
Cup Head	15776949
7.6 cm Head	15756949
7.6 cm Rubber Head Cover	15766949
7.6 cm Head with Rubber Cover	15736959
Steel 1.5 mL-2.0 mL Micro-Tube Holder	15706959

Accessories



Micro-Tube Holder

Mixes (48) 0.25 to 2 mL micro centrifuge tubes. Requires Insert Retainer.

Description	Part #
Micro-Tube Holder (2 pk)	15736949
Insert Retainer	15766939



Micro-Well Plate Holder

Ideal for mixing 96 well plates or deep well blocks. Requires Insert Retainer.

Description	Part #
Micro-Well Plate Holder (2 pk)	15746949
Insert Retainer	15766939



20-25 mm Tube Holder

Ideal for mixing up to (8) 50 mL centrifuge tubes. Requires Insert Retainer.

Description	Part #
Tube Holder (2 pk)	15716949
Insert Retainer	15766939



14-19 mm Tube Holder

Idea for mixing up to (8) 15 mL centrifuge tubes. Requires Insert Retainer.

Description	Part #
Tube Holder (2 pk)	15706949
Insert Retainer	15766939



9-13 mm Tube Holder

Ideal for mixing 5 mL culture tubes and micro-vials. Requires Insert Retainer.

Description	Part #
Tube Holder (2 pk)	15796939
Insert Retainer	15766939



Vessel Harness

Mixes Erlenmeyer flasks and media bottles. Requires Insert Retainer.

Description	Part #
Tube Holder (2 pk)	15786939
Insert Retainer	15766939



Ampule Tube Holder

Mixes storage vials and test tubes.

Description	Part #
Ampule holder (15-17 mm)	15716959
Ampule holder (10-17 mm)	15726959

NOTE: Fisherbrand™ vortex mixer accessories are interchangeable with other manufacturers' models. Call your Fisher Scientific™ sales representative

Advanced Microplate Vortex Mixers



- >> Designed for shaking microplates or tubes
- >> Designed for continuous duty
- >> Microprocessor Controls
- >> LED displays for speed and time
- >> 5 year warranty

The Fisherbrand™ Advanced Microplate Vortex Mixer is ideal for applications that demand repeatable results. Mixer features touchpad controls and LED displays for accurate speed (rpm) and time (minutes and seconds) results. Microprocessor control maintains set speed for strong, consistent mixing action. Timer will display elapsed time or, when programmed to a user defined limit, the unit will shut off when time reaches zero. Choose from two modes of operation: “Touch” mode which activates when depressing the cup head, or “On” mode when using accessory attachments.

Operating Conditions:

Unit can operate in conditions from 4 to 40°C, 20% to 85% relative humidity, non-condensing.

Ordering Information:

Includes cup head and single microplate holder. 5 year limited warranty on parts and labor. Units are supplied with 234 cm Euro type plug and UK and CH adapters.

Specifications		
Speed Range:	On Mode:	300 to 2500 rpm
	Touch Mode:	300 to 3500 rpm
Timer:		1 second to 160 hours
Orbit:		3.5 mm
Controls:		3-Way Power Switch LED Displays for Speed and Time Up/Down Buttons for Set-Point Control
Duty Rating:		Continuous Duty
Overall Dimensions (L x W x H):		26.7 x 13.7 x 11.4 cm
Ship Weight:		5.4 kg

Ordering Information

Description	Electrical	Cat. No.
Fisherbrand™ Advanced Microplate Vortex Mixer	230V 0.13 amps 30 watts	15519024

Standard Microplate Vortex Mixers



The Fisherbrand™ Standard Microplate Vortex Mixer is a variable speed analog mixer that is designed for continuous duty. The high speed and small orbit is optimal for effectively mixing microplates. Choose from two modes of operation: “Touch” mode for mixing tubes when the cup head is depressed, or “On” mode when using the microplate attachment for continuous operation.

Operating Conditions:

Unit can operate in conditions from 4 to 40°C, 20% to 85% relative humidity, non-condensing.

Ordering Information:

Includes cup head and single microplate holder. 5 year limited warranty on parts and labor. Units are supplied with 234 cm Euro type plug and UK and CH adapters.

>> Designed for shaking microplates or tubes

>> Designed for continuous duty

>> 5 year warranty

Specifications

Speed Range:	On Mode:	300 to 2500 rpm
	Touch Mode:	300 to 3500 rpm
Orbit:		3.5 mm
Controls:		3-Way Power Switch Speed Knob: Variable 1 to 10 Dial Marks
Duty Rating:		Continuous Duty
Overall Dimensions (L x W x H):		26.7 x 13.7 x 11.4 cm
Ship Weight:		5.4 kg

Ordering Information

Description

Fisherbrand™ Standard Microplate Vortex Mixer

Electrical

230V | 0.13 amps | 30 watts

Cat. No.

15529024

Standard Heavy-Duty Vortex Mixers



- >> Designed for continuous duty
- >> Variable speed
- >> 5 year warranty

The Fisherbrand™ Standard Heavy-Duty Vortex Mixer is a variable speed analog mixer that is designed for continuous duty. The heavy-duty design and efficient motor allow this mixer to operate in continuous duty and handle all accessories over the entire speed range. Choose from two modes of operation: “Touch” mode for mixing tubes when cup head or Universal Holder with Cover is depressed, or “On” mode when using any of the accessory attachments for continuous operation.

Operating Conditions:

Unit can operate in conditions from 4 to 40°C, 20% to 85% relative humidity, non-condensing.

Ordering Information:

Includes a cup head, Universal Holder with Cover, and a foam micro-tube insert for (38) 1.5 to 2 mL micro-tubes. 5 year limited warranty on parts and labor. Units are supplied with 234 cm Euro type plug and UK and CH adapters.

Specifications		
Speed Range:	On Mode:	300 to 2500 rpm
	Touch Mode:	300 to 3500 rpm
Orbit:		4.9 mm
Controls:		3-Way Power Switch Speed Knob: Variable 1 to 10 Dial Marks
Duty Rating:		Continuous Duty
Overall Dimensions (L x W x H):		24.1 x 16.8 x 16 cm
Ship Weight:		6.8 kg

Ordering Information

Description

Fisherbrand™ Standard Heavy-Duty Vortex Mixer

Electrical

230V | 0.13 amps | 30 watts

Cat. No.

15579014

Advanced Heavy-Duty Vortex Mixers



The Fisherbrand™ Advanced Heavy-Duty Vortex Mixer is ideal for applications that demand repeatable results. Mixer features touchpad controls and LED displays for accurate speed (rpm) and time (minutes and seconds) results. The heavy-duty design and efficient motor allow this mixer to operate in continuous duty and handle all accessories over the entire speed range. Choose from two modes of operation: “Touch” mode for mixing tubes when cup head or Universal Holder with Cover is depressed, or “On” mode when using any of the accessory attachments for continuous operation. Microprocessor control maintains set speed for strong, consistent mixing action. Timer will display elapsed time or, when programmed to user defined limit, the unit will shut off when time reaches zero.

Operating Conditions:

Unit can operate in conditions from 4 to 40°C, 20% to 85% relative humidity, non-condensing.

Ordering Information:

Includes a cup head, Universal Holder with Cover, and a foam micro-tube insert for (38) 1.5 to 2 mL micro-tubes. 5 year limited warranty on parts and labor. Units are supplied with 234 cm Euro type plug and UK and CH adapters.

- >> Designed for continuous duty
- >> LED displays for speed and time
- >> Microprocessor controls
- >> 5 year warranty

Specifications		
Speed Range:	On Mode: Touch Mode:	300 to 2500 rpm 300 to 3500 rpm
Timer:		1 second to 160 hours
Orbit:		4.9 mm
Controls:		3-Way Power Switch, LED Displays for Speed and Time, Up/Down Buttons for Set-Point Control
Duty Rating:		Continuous Duty
Overall Dimensions (L x W x H):		24.1 x 16.8 x 16 cm
Ship Weight:		6.8 kg

Ordering Information

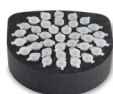
Description	Electrical	Cat. No.
Fisherbrand™ Advanced Heavy-Duty Vortex Mixer	230V 0.13 amps 30 watts	15569014

Vortex Mixer Accessories



Foam Insert for 0.5 mL micro-tubes
Foam insert holds (52) 0.5 mL micro-tubes. Requires Universal Holder.

Description	Part #
Micro-Tube Holder	15559024
Universal Holder	15549034



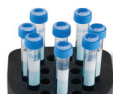
Foam Insert for 1.5 to 2 mL micro-tubes
Foam insert holds (38) 1.5 to 2 mL micro-tubes. Requires Universal Holder.

Description	Part #
1.5 to 2 mL micro-tubes	15569024
Universal Holder	15549034



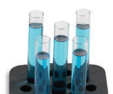
Foam Insert for 12-13 mm test tubes
Foam insert holds (34) 12-13 mm diameter test tubes. Requires Universal Holder.

Description	Part #
12-13 mm diameter test tubes	15599024
Universal Holder	15549034



Foam Insert for 15-18 mm test tubes
Foam insert holds (20) 15-18 mm diameter test tubes. Ideal for 15 mL centrifuge tubes. Requires Universal Holder.

Description	Part #
15-18 mm test tubes	15509034
Universal Holder	15549034



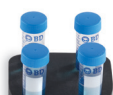
Foam Insert for 19-21 mm test tubes
Foam insert holds (18) 19-21 mm diameter test tubes. Requires Universal Holder.

Description	Part #
19-21 mm test tubes	15519034
Universal Holder	15549034



Foam Insert for 22-25 mm test tubes
Foam insert holds (13) 22-25 mm diameter test tubes. Requires Universal Holder.

Description	Part #
22-25 mm test tubes	15529034
Universal Holder	15549034



Foam Insert for 26-29 mm test tubes
Foam insert holds (4) 26-29 mm diameter test tubes. Ideal for 50 mL centrifuge tubes. Requires Universal Holder.

Description	Part #
26-29 mm test tubes	15539034
Universal Holder	15549034



Flat Foam Insert
Ideal for custom applications. Can be cut or drilled to fit your specifications. Requires Universal Holder.

Description	Part #
Flat Foam Insert	15549014
Universal Holder	15549034



Vessel Holders
Small Vessel Holder secures 125 and 250 mL Erlenmeyer flasks. Large Vessel Holder secures 500 and 1000 mL Erlenmeyer flasks. Vessel holders also include a grip mat. Requires Universal Holder.

Description	Part #
Small Vessel Holder	15579024
Large Vessel Holder	15589014
Universal Holder	15549034



Microplate Holder (single)*
Designed to hold one microplate

Description	Part #
Microplate Holder (single)	15549024



Microplate Holder (double)*
Designed to hold two standard microplates.

Description	Part #
Microplate Holder (double)	15509024



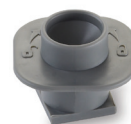
Microplate Holder (quad)
Designed to hold four standard microplates

Description	Part #
Microplate Holder (quad)	15539024



Stackable Microplate Holder Four
Designed to maximize the capacity of the Heavy-Duty Vortex Mixer to eight microplates by stacking the tray on top of the four plate holder.

Description	Part #
Stackable Microplate Holder	15599014



Cup Head*
Designed for mixing 1 tube at a time.

Description	Part #
Cup Head	15559014



Universal Holder & Cover
Replacement for items supplied with Heavy-Duty Vortex Mixer. Universal Holder Cover allows for mixing irregularly shaped objects.

Description	Part #
Universal Holder	15559034
Universal Holder Cover	15549034

* Unless noted with an asterisk (*), accessories for use on Heavy-Duty Vortex Mixers only

Analog Multi-Tube Vortexers



- >> Mixes up to 50 samples at one time
- >> Powerful permanent motor rated for continuous duty
- >> 5 year warranty

The vortexing action is created by holding the top tray of the vessel securely in place by two stainless steel posts (providing quiet, rattle-free mixing) while the bottom tray moves freely in a defined 3.6 mm eccentric orbit. The top plate is easily adjustable by loosening knobs and lifting the plate up or down and can be swung away from the tray for easy removal of samples. Suction cup feet dampen motion and prevent sliding on work surfaces. Base is constructed of rugged stainless steel with corrosion-resistant paint.

Analog Multi-Tube Vortexer

Conveniently angled front panel features rocker switch for run, time and standby modes, along with knobs for speed and time. Variable speed microprocessor control provides consistent, uniform mixing action. Electronic speed control is adjustable from 1200 to 2400 rpm. The automatic timer is adjustable from 0 to 60 seconds for simple repeat procedures.

Operating Conditions:

Unit can operate in conditions from 4 to 40°C, 20% to 85% relative humidity, non-condensing.

Ordering Information:

Units include a 234 cm detachable, Euro, UK, and CH plugs. Also supplied with a Tray Pad Set for support and one 12 mm Test Tube Foam Rack. Additional color-coded foam racks for different tube sizes, as well as a post extension kit that adds 152 cm to the post to accommodate tubes up to 25.4 cm are sold separately. 5 year limited warranty on parts and labor.

Specifications

Speed Range:	1200 to 2400 rpm
Timer:	0 to 60 seconds
Orbit:	3.6 mm
Weight Capacity:	4.5 kg
Duty Rating:	Continuous Duty
Tray Dimensions (L x W x H):	18.4 x 31.1 cm
Overall Dimensions (L x W x H):	24.1 x 38.4 x 40.6 cm
Ship Weight:	19 kg

Ordering Information

Description	Electrical	Cat. No.
Fisherbrand™ Analog Multi-Tube Vortexer	230V 0.4 amps 100 watts	15549004

Digital Multi-Tube Vortexers



- >> Mixes up to 50 samples at one time
- >> Powerful permanent motor rated for continuous duty
- >> 5 year warranty

Ideal for applications requiring accuracy and repeatability. Variable speed microprocessor control provides consistent, uniform mixing action. Easy-to-read LED displays for speed and time. Speed range is 500 to 2500 rpm and can be set in 25 rpm increments by pressing the up/down arrows. Programmable timer can be programmed to run 1 second to 160 hours or set to run in continuous mode. Programmable Pulse Mode can be operated in either timed or continuous modes. In timed mode, unit stops and starts in predetermined increments from 1 to 59 seconds.

Operating Conditions:

Unit can operate in conditions from 4 to 40°C, 20% to 85% relative humidity, non-condensing.

Ordering Information:

Units include a 234 cm detachable, Euro, UK, and CH plugs. Also supplied with a Tray Pad Set for support and one 12 mm Test Tube Foam Rack. Additional color-coded foam racks for different tube sizes, as well as a post extension kit that adds 152cm to the post to accommodate tubes up to 25.4 cm, are sold separately. 5 year limited warranty on parts and labor.

Specifications	
Speed Range:	500 to 2500 rpm
Timer:	1 second to 160 hours
Orbit:	3.6 mm
Weight Capacity:	4.5 kg
Duty Rating:	Continuous Duty
Tray Dimensions (L x W x H):	18.4 x 31.1 cm
Overall Dimensions (L x W x H):	24.1 x 38.4 x 40.6 cm
Ship Weight:	19 kg

Ordering Information

Description	Electrical	Cat. No.
Fisherbrand™ Digital Multi-Tube Vortexer	230V 0.4 amps 100 watts	15559004

Accessories

Description	Capacity	Color	Cat. No.	Description	Capacity	Color	Cat. No.
10 mm Test Tube Rack	50	Gray	15569004	25 mm Test Tube Rack	28	White	15509014
12 mm Test Tube Rack	50	Blue	15579004	29 mm Test Tube Rack	15	Red	15519014
13 mm Test Tube Rack	50	Yellow	15589004	Replacement Tray Pad Set (top and lower pad)	N/A	Gray	15529014
16 mm Test Tube Rack (for 15 mL centrifuge tubes)	50	Green	15599004	Post Extension Kit	N/A	N/A	15539014

Competitive Advantage

FISHERBRAND VORTEX MIXERS

- 5 year warranty on parts and labor for all products
- Manufactured in the USA
- All products are 50/60 Hz, CE marked, tested and listed with TUV, a nationally recognized testing laboratory.
- Competitive pricing
- Custom manufacturing

FIVE
5
YEAR
WARRANTY



Made in the U.S.A.

fisherbrand

Distributed by Fisher Scientific. Contact us today:

Austria: fishersci.at **Belgium:** fishersci.be **Denmark:** fishersci.dk
Germany: fishersci.de **Ireland:** fishersci.ie **Italy:** fishersci.it
Finland: fishersci.fi **France:** fishersci.fr **Netherlands:** fishersci.nl
Norway: fishersci.no **Portugal:** fishersci.pt **Spain:** fishersci.es
Sweden: fishersci.se **Switzerland:** fishersci.ch **UK:** fishersci.co.uk

© 2023 Thermo Fisher Scientific Inc. All rights reserved.

Trademarks used are owned as indicated at fishersci.com/trademarks.

