

# **GYROTWISTER-3 D SHAKER**

---

## **User Manual**



**S1000-B  
S1000-B-230V  
S1000-A-B  
S1000-A-B-230V**

**Labnet**   
Labnet International



## 1.0 GENERAL SPECIFICATIONS

Electrical requirements:

115V model	115V $\pm$ 10% - 50/60Hz, 0.3A
230V model	230V $\pm$ 10% - 50/60Hz, 0.15A
Fuse	2 x 0.5A 230V ; 2 x 1A 115V
Speed	from 3 to 60 rpm
Tilt angle - S1000-B	3D/fixed 7° pitch
Tilt angle - S1000-A-B	3D/adjustable $\pm$ 10°
Timer	20 – 120 min or continuous
Maximum load	11lb/5 kg
Dimensions WxLxH / Weight	330x352x210mm / 6.6 kg
Platform dimensions WxL	300x300mm (useable area)
Optional platforms	400x400mm; 500x500mm
Included accessories	one flat rubber mat and one dimpled mat
Operating Conditions	4°C to 70°C, up to 85% RH, non-condensing

## 2.0 INSTALLATION OF THE SHAKER

### 2.1 UNPACKING

Before starting the installation, carefully examine the shaker for possible damage or missing parts.

- Open the box and carefully remove the padding. Check that the shaker has not been visibly damaged during transportation. Keep the packing material until you are sure that the shaker works properly.
- Carefully lift the device out of the box.
- Be sure that the following information is included on the serial label located on the back of the unit: Serial Number, Product number, Electrical rating.
- Check that the power cord has a pin configuration that fits into a wall socket according to the local standard.

Should any kind of damage have occurred during transportation, contact the carrier immediately. The carrier is responsible for shipping damage.

### 2.2 SELECTING THE CORRECT LOCATION

When locating the shaker, please consider following:

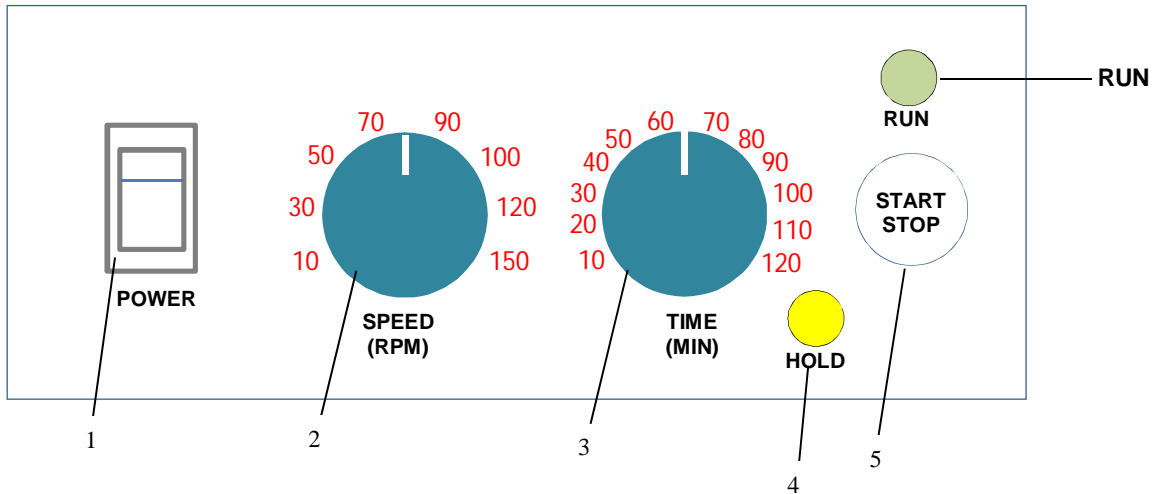
- Put the shaker on horizontal, leveled and stable surface.
- Leave enough space around the shaker for normal air circulation, min. 10 cm.
- Leave enough space around the shaker for easy access and maintenance.
- Avoid locations subject to shocks and vibrations.
- Avoid locations subject to frequent power fluctuations or power losses (It may affect shaker performance)

Connect the main power cord to the shaker then connect the plug end of the cord to a grounded wall socket.

### 2.3 ADJUSTING TILT ANGLE - Gyrotwister Adjustable (S1000-A-B) model only.

To adjust the tilt angle, remove the mat from the platform and locate the two knurled rings in the center of the platform. Hold the outer ring with the fingers and loosen the inner ring by rotating counter clockwise. Then rotate the outer ring to adjust the angle. Rotating clockwise increases tilt angle. Once the desired angle is set, retighten the center knurl ring by rotating clockwise. An Allen wrench may be used to tighten. Ring must be tight or load can shift during mixing. Test the unit with a load on the platform before using the unit for mixing.

### 3.0 INSTRUCTIONS FOR USE



1. **POWER** switch – to turn the shaker *ON* (power switch illuminates) or *OFF*
2. **SPEED** potentiometer – to set the shaker speed
3. **TIME** potentiometer – to set timed operation
4. **HOLD** – yellow light illuminates when shaker is set on HOLD for continuous operation
5. **START/STOP** button to start or stop shaking
6. **RUN** – green light illuminates when shaker operates

NOTE: The speed can be adjusted at any time during shaker operation. The time however can not be changed while the shaker is in motion. To change the time press the STOP button first, allow the shaker platform to come to full stop and set the time value again. Restart the shaker.



**Do not use the shaker near water sources. Be sure that water doesn't get on the device, especially during the cleaning procedures!**

- Do not expose the shaker to aggressive vapors (e.g. organic solvents).
- Do not insert any objects into the shaker (such as screw driver or metal rods).
- Never operate the shaker without platform securely attached.
- Hazardous samples should be shaken only in appropriate containment vessels.

NOTE : Misuse or unauthorized modifications will waive the warranty rights. If the equipment is used in a manner not specified by the manufacturer, the safety features of the shaker may be impaired.



**Do not shake flammable or explosive samples!**

## 5.0. TROUBLESHOOTING GUIDE / SERVICE

Should you have a question about the operation of *the Gyrotwister* or if service is required, contact **Corning at: 800-492-1110**. Do not send in a unit for service without first calling to obtain a repair authorization number. Should the unit require return to Corning for service, it should be properly packed to avoid damage. Any damage resulting from improper packaging shall be the responsibility of the user.

Problem	Explanation / Solution
POWER switch doesn't light up	Check the power connection, Check fuses Call Labnet Service Department
Shaker does not START	Check the power connection, Check fuses Call Labnet Service Department

## 5.0 ROUTINE MAINTANCE / CLEANING

- No routine maintenance or lubrication is required.
- It is recommended that the shaker is kept clean to insure long trouble-free operation.

### 5.1 CLEANING

The outside housing can be cleaned with a soft, damp cloth when needed. Do not use any aggressive or abrasive cleaners (acetone, nitro, polish etc.) This may permanently damage the shaker finish.

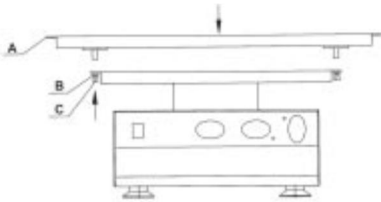


**Before cleaning the shaker, always unplug the power cord from the wall**

## 6.0 INSTALLING EXPANSION PLATFORMS 40x40cm, 50x50cm

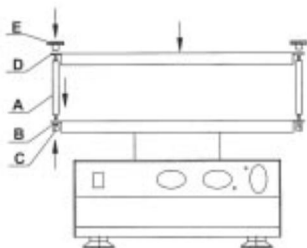


**Make sure the shaker is switched off before installing add**



1. Set upper platform (A) through four holes at the corners of the bottom platform
2. Secure the upper platform (A) with washers (B) and nuts (C)

### 6.1 INSTALLING DOUBLE STACKING PLATFORM



1. Set posts (A) through four holes at the corners of bottom platform
2. Add washer (B) and nut (C) to each post.
3. Fit upper platform (D) on the top of four posts through corner holes.
4. Screw on four metal knurl nuts (E) to secure upper platform.

## EQUIPMENT DISPOSAL-EUROPEAN REGULATIONS



*According to Directive 2012/19/EU of the European Parliament and of the Council of 4 July 2012 on waste electrical and electronic equipment (WEEE), Gyrotwister is marked with the crossed-out wheeled bin and must not be disposed of with domestic waste.*

*Consequently, the buyer shall follow the instructions for reuse and recycling of waste electronic and electrical equipment (WEEE) provided with the products and available at the following link: [www.corning.com/weee](http://www.corning.com/weee)*

## Warranty Statement

Corning Incorporated (Corning) warrants that this product will be free from defects in material and workmanship for a period of one (1) year from date of purchase. CORNING DISCLAIMS ALL OTHER WARRANTIES WHETHER EXPRESSED OR IMPLIED, INCLUDING ANY IMPLIED WARRANTIES OF MERCHANTABILITY OR OF FITNESS FOR A PARTICULAR PURPOSE. Corning's sole obligation shall be to repair or replace, at its option, any product or part thereof that proves defective in material or workmanship within the warranty period, provided the purchaser notifies Corning of any such defect. Corning is not liable for any incidental or consequential damages, commercial loss or any other damages from the use of this product.

This warranty is valid only if the product is used for its intended purpose and within the guidelines specified in the supplied instruction manual. This warranty does not cover damage caused by accident, neglect, misuse, improper service, natural forces or other causes not arising from defects in original material or workmanship. This warranty does not cover motor brushes, fuses, light bulbs, batteries or damage to paint or finish. Claims for transit damage should be filed with the transportation carrier.

In the event this product fails within the specified period of time because of a defect in material or workmanship, contact Corning's Customer Service at the following numbers: USA: 1-800-492-1110; Canada: 1-978-442-2200. For other regions of the world, please visit [www.corning.com/lifesciences](http://www.corning.com/lifesciences) or see the included instruction manual for a list of World Wide Support Offices.

Corning's Customer Service team will help arrange local service where available or coordinate a return authorization number and shipping instructions. Products received without proper authorization will be returned. All items returned for service should be sent postage prepaid in the original packaging or other suitable carton, padded to avoid damage. Corning will not be responsible for damage incurred by improper packaging. Corning may elect for onsite service for larger equipment.

Some states do not allow limitation on the length of implied warranties or the exclusion or limitation of incidental or consequential damages. This warranty gives you specific legal rights. You may have other rights which vary from state to state.

No individual may accept for, or on behalf of Corning, any other obligation of liability, or extend the period of this warranty.

For your reference, make a note of the serial number, date of purchase and supplier here.

Serial No. \_\_\_\_\_ Date Purchased \_\_\_\_\_

Supplier \_\_\_\_\_

**Warranty/Disclaimer:** Unless otherwise specified, all products are for research use only. Not intended for use in diagnostic or therapeutic procedures. Corning makes no claims regarding the performance of these products for clinical or diagnostic applications.

**Please register your product online at:  
[www.labnetinternational.com](http://www.labnetinternational.com)**



[Labnetinfo@corning.com](mailto:Labnetinfo@corning.com)  
[www.labnetinternational.com](http://www.labnetinternational.com)