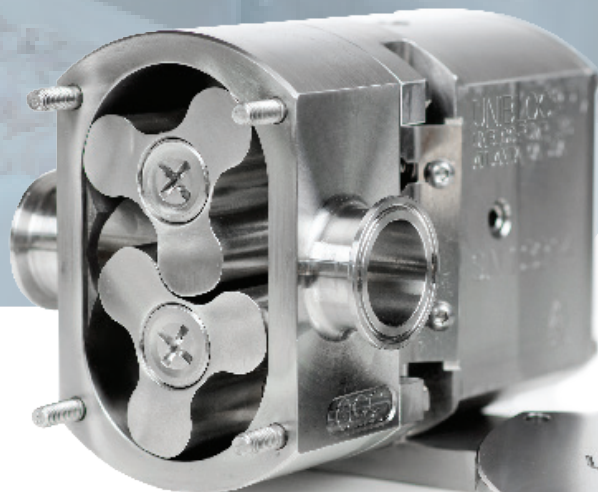


ROTARY LOBE AND GEAR POSITIVE DISPLACEMENT PUMPS

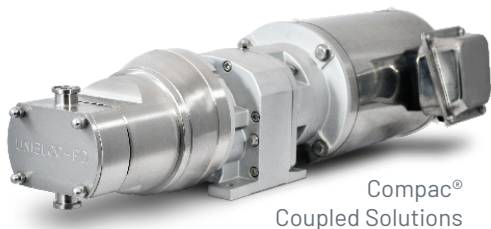
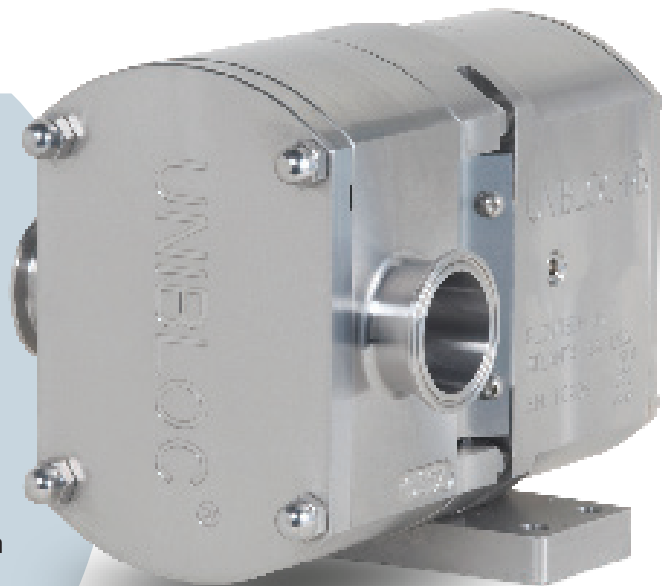
When it counts,
count on Unibloc®

- Exclusive QuickStrip™ COP design for daily washdowns
- CIP/SIP ready
- FDA approved materials
- Widest range of PD pump sizes



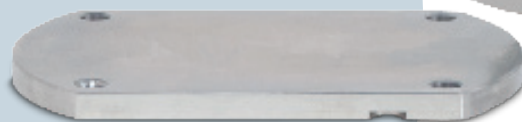
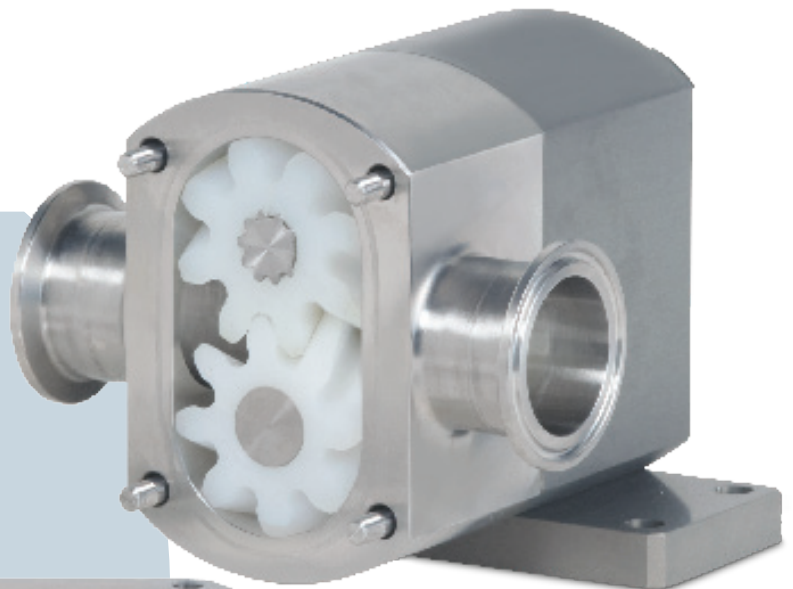
ROTARY LOBE PUMPS

- **Fully machined** stainless or coated aluminum bearing housing options
- **Compac® FMS (Flange Mount System)** allows pumps to easily direct-mount to motors or gear reducers
- **Port sizes from 3/8" to 8"**
- **Capacity up to 480 GPM** (1.815 LPM)
- **High temperature** compatible up to 400°F
- **High pressure** pumps available
- **Bearing housing** material and finish options include stainless steel, painted steel, and multicoated aluminum
- **Multiple rotor designs/options** available to meet specific applications



SANITARY GEAR PUMPS

- **Non-pulsating flow**
- **Helical cut gears** for smooth, accurate, and quiet operation
- **Sanitary 3A design**, Third Party Verification (TPV)
- **Sanitary tri-clamp porting** in horizontal or vertical orientation
- **Capacity up to 36 GPM** (137 LPM)
- **Port sizes from 1/2" to 2"**
- **Interchangeable gear housings** for multiple capacities and products
- **Multiple gear material options**
- **Multiple pump seal options** for different customer needs
- **Compac® FMS (Flange Mount System)** allows pumps to easily direct-mount to motors or gear reducers



Unibloc-GP with Compac® FMS



Unibloc-GP Smooth Flow Gears

SIMPLE, SAFE FOOLPROOF ASSEMBLY

Fully-machined bearing housings with rounded tops create no flat surfaces, allowing water to drain off

Rotor design for low shear and consistent flow

SANITARY GEAR PUMP

Helical gears provide smooth, quiet operation and low pulsation

ROTARY LOBE PUMP

316L stainless steel pump heads feature no seams, pockets, or crevices that can trap product and bacteria

A HIGHER STANDARD IN SANITARY PUMPING PD PERFORMANCE

Unibloc brand lobe and gear positive displacement pumps set the industry standard in high performance sanitary pumps. With a robust, durable gearbox at the core and a compact design, these positive displacement pumps offer a solid foundation for worry-free reliability and uncompromising accuracy. Unibloc provides the widest range of sanitary pumping solutions for metered flows as high as 480 GPM.

Designed for the toughest processing and cleaning environments, **Unibloc brand lobe and gear pumps are the premier choice for 3A sanitary applications.**



BETTER MATERIALS, BETTER ENGINEERING

The Unibloc brand bearing housing is the toughest precision-built bearing housing in the industry. Unibloc' fully-machined bearing housings are available in both 316L SS and anodized aluminum. Every pump head is precision-machined from solid 316L stainless steel.

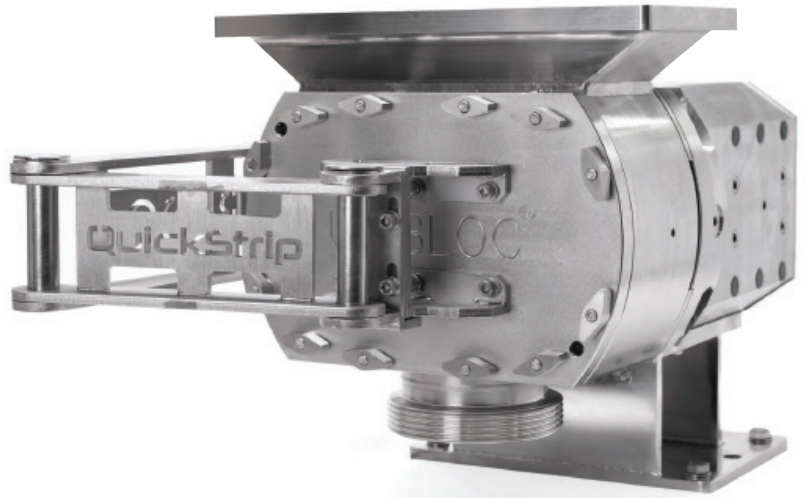
Each unit's unique, compact design and short, stout shafts eliminate deflection at high pressures, resulting in greater efficiency, increased flow rates, and longer life. More efficiency means slower operation speeds and increased lifespan of components. Hardened sleeved shafts are also available for increased durability.

The patented rotor design of lobe pump units enables low product shear and excellent displacement. Exceptionally tight, no-contact tolerances and optional non-galling alloy rotors eliminate the risk of foreign material and wear.

Gear pump units feature helical cut gears for a pulsation-free flow and smooth, quiet operation. Compatible with servo motor-driven filling equipment, these pumps offer flow rates to exacting specifications.

Only Unibloc offers the exclusive QuickStrip® design.

Specifically engineered to meet the FDA's rigorous daily strip-down cleaning requirements, QuickStrip provides tool-free access to the pump head and seals for unmatched ease of sanitation. Available in both lobe and gear style pumps, the simple, repeatable one-way assembly guarantees proper performance and reduces damage and foreign material from improper handling. Most QuickStrip pump models have a front-loaded seal design that provides access to the seals without removing the pump head.



- **Patented QuickStrip® COP design**
- **Eliminates damage caused by daily cleaning**
- **Minimizes foreign material risk**

ULTRA-HYGIENIC DESIGN

Every lobe and gear pump produced features Unibloc's signature, seamless design, and porosity-free guarantee for the cleanest CIP/SIP capable pump in the industry. There are no pockets or crevices that can trap product and harbor dangerous microorganisms. The smooth exterior of the gearbox provides a non-stick surface that makes cleaning easier.

All Unibloc lobe and gear pumps are CIP/SIP capable and made of FDA-approved materials.

SOLUTIONS FOR ANY SANITARY PUMPING APPLICATION

Unibloc lobe pumps are ideal for high pressure, high temperature applications, and low shear or abrasive products. Gear pumps are well suited to high lubricity products, such as fats, oils, and glycerin, that aid in smooth gear operation.

Versatile Seal Mount (VSM) technology allows any seal to easily mount on any pump head with no modifications, simplifying operations with multiple applications.

Unibloc rotary lobes and gears are available in a variety of industry-specific materials and configurations. Rotor materials include stainless steel alloy, Polyflex® plastic metal detectable, and DuraCore® composite designs. Gear material options include Teflon/Stainless, Teflon, and various plastics.

SPECIFICATIONS

Rotary Lobe Pumps

Model	Displacement gal (l) / 100 rev	Inlet/Outlet Size Standard	Rectangle Option	Max Speed RPM	Max Capacity gal (l) / min
PD200-0	0.3 (1.1)	0.5"		1000	3.0 (11.0)
PD200	0.8 (3.0)	0.5" or 0.75"		1000	8.0 (30.0)
PD250	1.1 (4.2)	0.75"		1000	11.0 (42.0)
PD275	1.4 (5.3)	0.75" or 1.0"		1000	14.0 (53.0)
PD300	2.8 (10.6)	1.0" or 1.5"		1000	28.0 (106.0)
PD350	4.0 (15.2)	1.5" or 2.0"	X	1000	40.0 (152.0)
PD400	8.1 (30.8)	1.5"	X	900	72.9 (277.2)
PD450	10.9 (41.4)	2.0"		900	98.1 (372.6)
PD500	22.1 (84.0)	2.5"	X	800	176.8 (672.0)
PD550	28.5 (108.0)	3.0"	X	800	228.0 (864.0)
PD575	36.1 (137.0)	3.0" or 4.0"	X	700	252.7 (959.0)
PD501	22.1 (84.0)	2.5"		800	176.8 (672.0)
PD551	28.5 (108.0)	3.0"		800	228.0 (864.0)
PD576	33.0 (125.0)	3.0" or 4.0"		700	231.0 (875.0)
PD600	46.0 (175.0)	4.0"	X	600	276.0 (1050.0)
PD602	53.0 (201.0)	4.0"	X	600	318.0 (1206.0)
PD650	70.0 (266.0)	4.0" or 6.0"	X	500	350.0 (1330.0)
PD652	80.0 (304.0)	4.0" or 6.0"	X	500	400.0 (1520.0)
PD677	100.0 (380.0)	6.0" or 8.0"	X	500	500.0 (1900.0)

Sanitary Gear Pumps

Model	Displacement gal (l) / 100 rev	Inlet/Outlet Size Standard	Max Speed RPM	Max Capacity gal (l) / min
GP200/07	0.2 (0.8)	0.5"	1400	2.8 (11.2)
GP175/22	0.23 (0.9)	0.75"	1400	3.2 (12.6)
GP200/10	0.3 (1.1)	0.75"	1400	4.2 (15.4)
GP175/38	0.4 (1.5)	1.0"	1400	5.6 (21.0)
GP275/22	0.7 (2.7)	1.0"	1400	9.8 (37.8)
GP275/38	1.0 (3.8)	1.5"	1400	14.0 (53.2)
GP300/28	1.6 (6.1)	1.0"	1200	19.2 (73.2)
GP350/40	2.3 (8.7)	1.5"	1200	27.6 (104.4)
GP375/52	3.0 (11.5)	2.0"	1200	36.0 (138.0)

Unibloc Hygienic Technologies provides a broad portfolio of powerful solutions for companies around the world.



unibloctech.com



Copyright © 2022 Unibloc Hygienic Technologies, LLC

UNI-202204