



Thermo Scientific MaxQ Shakers

**Increase your product yield with our
MaxQ Shaker collection**

Type		Benchtop (B), Floor (F)		Platform Size Inches (cm)	250ml Flask Capacity Dedicated Platform
		Stackable (S)	Motion		
MaxQ 2000		B	Orbital	11 x 13 (33 x 28)	12
				18 x 18 (45.7 x 45.7)	25
				18 x 24 (45.7 x 60.9) ¹	N/A
MaxQ 3000		F	Orbital	30 x 18 (76 x 45.7)	40
				36 x 24 (91 x 61)	70
MaxQ 2506/2508		B	Orbital/ Recipro- cating	11 x 13 (33 x 28)	10
				18 x 18 (45.7 x 45.7)	25
				18 x 24 (45.7 x 60.9)	24
MaxQ 4450		B	Orbital	11 x 13 (33 x 28)	10
MaxQ 4000		B	Orbital	18 x 18 (45.7 x 45.7)	25
MaxQ 5000		F	Orbital	30 x 18 (76 x 45.7)	40
MaxQ 6000		S	Orbital	18 x 18 (45.7 x 45.7)	25
MaxQ 8000		S	Orbital	29.5 x 18 (74.9 x 45.7)	30
MaxQ 7000		B	Orbital	11 x 13 (28 x 33)	9

¹Universal platform only

Thermo Scientific MaxQ Shakers

250ml Flask Capacity Universal Platform	Maximum Capacity Largest Flask on a Platform	Orbit Diameter Reciprocating Motion Inches (cm)	RPM Range	Temperature Range °C (T _A =Ambient Temperature)	Maximum Load Lb. (kg)	Refrigeration	Gassing Manifold	Page
9	1 x 6L	0.75 (1.9)	Analog: 40 - 400	N/A	35 (15.9)			5 - 7
16	2 x 6L		Digital: 15 - 500					
24	3 x 6L							
24	3 x 6L	1.0 (2.54)	Analog: 40 - 400	N/A	50 (22.7)			5 - 7
40	6 x 6L		Digital: 15 - 500					
9	1 x 6L	2508: 0.4 (1.2) ²	2508 Analog: 40 - 400	N/A	15 (6.8)			8 - 9
16	2 x 6L	2506: 0.5 to 1.5 (1.2 to 3.8) ³	2506 Analog: 10 - 250					
24	3 x 6L							
9	1 x 2.5L	0.75 (1.9)	Analog: 40 - 400	T _A +5°C to 80°C	35 (15.9)			10 - 11
			Digital: 15 - 500					
16	6 x 2L	0.75 (1.9)	Analog: 40 - 400	T _A +10°C to 60°C	50 (22.7)	●	●	12 - 13
			Digital: 15 - 500	T _A +10°C to 80°C				
				T _A -15°C to 60°C				
24	4 x 6L	1.0 (2.54)	Analog: 40 - 400	T _A +10°C to 60°C	75 (34)	●	●	14 - 15
			Digital: 15 - 500	T _A -15°C to 60°C				
16	2 x 6L	0.75 (1.9)	Digital: 15 - 500	T _A +10°C to 80°C	35 (15.9)	●		16 - 17
				T _A -15°C to 80°C				
30	12 x 2L	1.0 (2.54)	Digital: 25 - 500	T _A +10°C to 60°C	18 (8)	●		18 - 21
				T _A -15°C to 60°C				
9	1 x 6L	0.5 (1.27)	Analog: 40 - 400	T _A +5°C to 65°C	35 (15.9)		●	22 - 23
			Digital: 15 - 500	T _A -5°C to 65°C				

²Fixed reciprocating stroke length and orbital motion; ³Adjustable reciprocating stroke length

MaxQ Means Maximum Performance

You'll get unmatched power, accuracy, and reproducible results with Thermo Scientific MaxQ shakers –and more. In fact, once they're set up in your lab, you'll see how our long list of innovative product features translates to multiple benefits for your team, assuring you effectiveness, efficiency, and productivity.



Reliability

Our triple eccentric drive mechanism gives you continuous 24-hour operation and allows you to shake and stir large and uneven loads, smoothly and uniformly. Plus, it's guaranteed for life.



Ease of Use

Easy-to-use controls let you precisely adjust individual displays for temperature, speed and time. View all parameters simultaneously to prevent risk of error while establishing running conditions.



Flexibility

Bench-top, floor and stackable models are available, fully equipped with incubation, refrigeration and water bath options to accommodate many applications and budgets. Platforms come with numerous mounting holes to allow the addition and interchangeability of clamps that hold various sizes of Erlenmeyer flasks, beakers, microwell plates, test tube racks and separatory funnels.



MaxQ 2000 shaker
Model No. SHKE2000

MaxQ 3000 shaker
Model No. SHKA3000

Thermo Scientific MaxQ 2000 & 3000 Open Air Platform Shakers

Choose from Several Platform Sizes to Increase Capacity by just Changing the Platform

- Choice of analog or digital operating system.
- Triple eccentric drive handles heavy loads, provides uniform agitation and continuous 24-hour operation, even at high speeds.
- Units operate in temperature ranges of 0°C to 40°C and humidity conditions from 20 to 80% non-condensing enables them to be used in incubators, warm rooms, environmental chambers and refrigerators.
- Five year warranty on parts, one year labor and *LIFETIME* on drive mechanism.

Analog Operating System

- Variable speed from 40 to 400 rpm, controlled by a rotary dial.
- Guaranteed accurate settings, with integrated tachometer that monitors and displays speed in rpm.
- Operate shaker in continuous mode or set time from 1 to 60 minutes.

Digital Operating System

- Variable speed control from 15 to 500 rpm.
- Continuous and timed operation from 0.1 hour to 999 hours or 0.1 minute to 999 minutes.
- Minimize errors by viewing speed and operating time simultaneously on two individual LED displays.
- Shaker shutdown and visual/audible alarms signal if unit operates $\pm 10\%$ of set speed, preventing shaker from walking.
- User-adjustable speed calibration can be performed using a digital handheld tachometer, where verification is required and protocols can be standardized.

- Unbalanced load sensor stops platform motion when excess vibration is detected and visual/audio alarms signal until condition is corrected.
- Soft start feature eliminates sudden starts and stops, splashing of vessel contents or wetting of flask closure.
- Retains parameters during power failure and restarts unit automatically after power is restored.
- RS232 interface allows remote monitoring of speed and time.

CO₂ Resistant Digital Operating System

Contains all of the features and benefits of the Digital Operating System plus:

- Electrical and mechanical components have been treated to protect them from up to 10% CO₂ and 90% humidity conditions non-condensing.
- This treatment prevents humidity and CO₂ from reacting with electrical components and forming carboxylic acid.
- The shakers will not malfunction and can be used continuously in a direct heat or air jacketed CO₂ incubator.

Applications

- Cell culture
- Solubility studies
- Extraction procedures
- Diagnostic tests
- General mixing
- Bacterial suspensions
- Staining and destaining
- Washing procedures
- Hybridization

Thermo Scientific MaxQ 2000 & 3000 with Universal Platforms and Clamps

ORDERING INFORMATION

For a complete system order: 1. Shaker, 2. Platform, 3. Clamps

Shaker Options	Speed Range (rpm)	Orbit Diameter In. (cm)	Max. Load Lb. (kg)	Overall Dimensions Inches (cm)			Shipping Weight Lb. (kg)	Model No. 120V, 50/60 Hz	Model No. 240V, 50/60 Hz
				L	W	H			
MaxQ 2000 – Small Open Air Shakers									
Analog	40-400	0.75 (1.9)	35 (15.9)	17.4 (44.2)	13.5 (34.3)	6.4 (16.3)	47 (21.3)	SHKA2000	SHKA2000-1CE
Digital	15-500 ±1	0.75 (1.9)	35 (15.9)	17.4 (44.2)	13.5 (34.3)	6.4 (16.3)	47 (21.3)	SHKE2000	SHKE2000-1CE
Digital, CO ₂ Resistant	15-500 ±1	0.75 (1.9)	35 (15.9)	17.4 (44.2)	13.5 (34.3)	6.4 (16.3)	47 (21.3)	SHKE2000C02	SHKE2000C02-1CE
MaxQ 3000 – Large Open Air Shakers									
Analog	40-400	1.0 (2.54)	50 (22.7)	25.8 (65.5)	29.4 (74.4)	9.7 (24.6)	207 (93.9)	SHKA3000	SHKA3000-1CE
Digital	15-500 ±1	1.0 (2.54)	50 (22.7)	25.8 (65.5)	29.4 (74.4)	9.7 (24.6)	207 (93.9)	SHKE3000	SHKE3000-1CE

REQUIRED ACCESORIES

MaxQ 2000				Model No.
Platforms Choose the platform that best fits your needs.	Universal Platforms – Maximum flexibility for using a mix of different size labware on a single platform. See Universal Clamp Guide for clamp capacities. Purchase clamps separately.	11 x 13" (28 x 33 cm)	Platform without Clamps	30100¹
		11 x 13" (28 x 33 cm)	Dual Stacked Platform without Clamps	30125
		18 x 18" (45.7 x 45.7 cm)	Platform without Clamps	30110¹
		18 x 18" (45.7 x 45.7 cm)	Dual Stacked Platform without Clamps	30128
		18 x 24" (45.7 x 60.9 cm)	Platform without Clamps	30106
	Dedicated Platforms Clamps come installed to provide maximum capacity.	11 x 13" (28 x 33 cm)	Platform with Clamps	See Dedicated Platforms on p. 7
		18 x 18" (45.7 x 45.7 cm)	Platform with Clamps	See Dedicated Platforms on p. 7
Clamps	Mix and match clamps for your Universal Platform.			See Universal Clamp Guide below
Misc. Accessories	Adapter set for stacking two platforms (Models 30100 and 30110 only)			3522-3
MaxQ 3000				Model No.
Platforms Choose the platform that best fits your needs.	Universal Platforms – Maximum flexibility for using a mix of different size labware on a single platform. See Universal Clamp Guide for clamp capacities. Purchase clamps separately.	30 x 18" (76 x 45.7 cm)	Platform without Clamps	30115BI
		30 x 18" (76 x 45.7 cm)	Dual Stacked Platform without Clamps	30124
		36 x 24" (91 x 61 cm)	Platform without Clamps	30120BI
		30 x 18" (76 x 45.7 cm)	Platform with Clamps	See Dedicated Platforms on p. 7
		36 x 24" (91 x 61 cm)	Platform with Clamps	See Dedicated Platforms on p. 7
	Dedicated Platforms Clamps come installed to provide maximum capacity.			
Clamps	Mix and match clamps for your Universal Platform.			See Universal Clamp Guide below

¹Stackable, purchase of two platforms and stacking kit required

UNIVERSAL CLAMP GUIDE

Universal Platform Clamps Mix and match to customize the Universal Platform for your unique needs. Clamps sold as individual units.		Clamp Capacity Guide Maximum clamp capacity of vessels for the Universal Platform				
		MaxQ 2000			MaxQ 3000	
Clamp	Model No.	11 x 13" (28 x 33 cm)	18 x 18" (45.7 x 45.7 cm)	18 x 24" (45.7 x 60.9 cm)	30 x 18" (76 x 45.7 cm)	36 x 24" (91 x 61 cm)
Flask Clamp Starter Kit, includes (1) microplate clamp, (2) 125ml flask clamps, (4) 250ml flask clamps, (4) 500ml flask clamps, (2) 1L flask clamps, (2) 2L flask clamps	30129					
Microplate/Deep-well plate	30175	5	10	15	18	29
10 ml Erlenmeyer Flask	30150BI	60	113	157	112	160
25 ml Erlenmeyer Flask	30151	60	64	80	112	160
50 ml Erlenmeyer Flask	30152BI	30	32	40	112	160
125 ml Erlenmeyer Flask	30153	13	32	40	44	80
250 ml Erlenmeyer Flask	30154BI	9	16	24	24	40
300 ml Erlenmeyer Flask	30155	7	16	20	20	40
500 ml Erlenmeyer Flask	30156BI	6	16	20	18	40
1L Erlenmeyer Flask	30157BI	4	9	10	12	21
2L Erlenmeyer Flask	30158	1	6	5	6	11
4L Erlenmeyer Flask	30159	1	4	4	6	11
6L Erlenmeyer Flask	30160	1	2	3	3	6
2500 ml Low Form Culture Flask	30161	1	1	2	3	6
2800 ml Fernbach Flask	30162	1	4	4	6	8
Adhesive Flask Mat, 9 x 9" (23 x 23 cm)	300349³	–	–	–	–	–
Test Tube Racks – Full Size						
10-13 mm, red, 6 x 12 array	30180BI	3	6	8	13	16
14-16 mm, orange, 6 x 12 array	30182¹	2	4	6	7	10
17-20 mm, white, 4 x 10 array	30184	3	5	6	9	14
21-25 mm, blue, 4 x 10 array	30186	2	3	4	7	7
26-30 mm, green, 3 x 8 array	30188²	2	4	6	7	7
Microcentrifuge, 1.5 ml, blue, 8 x 12 array	30190	2	5	6	8	10
Test Tube Racks – Half Size						
10-13 mm, red, 6 x 6 array	30181	6	12	15	21	25
14-16 mm, orange, 6 x 6 array	30183¹	4	6	8	10	12
17-20 mm, white, 4 x 5 array	30185	4	8	13	18	20
21-25 mm, blue, 4 x 4 array	30187	4	6	9	10	15
26-30 mm, green, 3 x 3 array	30189²	6	9	12	15	15
Microcentrifuge, 1.5 ml, blue, 4 x 6 array	30191	4	8	10	14	20

¹Fits 15 ml centrifuge tubes ²Fits 50 ml centrifuges tubes ³Can be cut to fit, reusable

Dedicated Platforms with Clamps

ORDERING INFORMATION

MAXQ 2000 / MAXQ 2508/ MAXQ 2506

Clamps come installed to provide maximum capacity			
Platform Size		Capacity	Model No.
11 x 13" (28 x 33 cm)	10 ml Erlenmeyer Flask	60	3523-1
	25 ml Erlenmeyer Flask	30	3523-2
	50 ml Erlenmeyer Flask	30	3523-3
	125 ml Erlenmeyer Flask	15	3523-4
	250 ml Erlenmeyer Flask	10	3523-5
	500 ml Erlenmeyer Flask	6	3523-7
	1L Erlenmeyer Flask	4	3523-8
	2L Erlenmeyer Flask	4	3523-9
	Separatory Funnel (500 ml to 2L)	2	3523-39
	Utility Tray	—	3523-46
	11 x 13" Adjustable Vessel Platform	—	3523-49
18 x 18" (45.7 x 45.7 cm)	18 x 18" Adjustable Vessel Platform	—	3523-52
	5 Tier, holds platelet bags (10 x 10")	5 bags	3523-51
	10 ml Erlenmeyer Flask	113	3524-1
	25 ml Erlenmeyer Flask	64	3524-2
	50 ml Erlenmeyer Flask	64	3524-3
	125 ml Erlenmeyer Flask	32	3524-4
	250 ml Erlenmeyer Flask	25	3524-5
	300 ml Erlenmeyer Flask	16	3524-6
	500 ml Erlenmeyer Flask	16	3524-7
	1L Erlenmeyer Flask	9	3524-8
	2L Erlenmeyer Flask	5	3524-9
	Separatory Funnel (500 ml to 2L)	3	3524-49
	Utility Tray	—	3524-46
	10 ml beaker	152	3524-35
	20 ml beaker	104	3524-36
	30 ml beaker	104	3524-37
	100 ml beaker	44	3524-38
	250 ml beaker	25	3524-39
	400 ml beaker	25	3524-40
	600 ml beaker	16	3524-41

MAXQ 3000

Clamps come installed to provide maximum capacity			
Platform Size		Capacity	Model No.
30 x 18" (76 x 45.7 cm)	10 ml Erlenmeyer Flask	112	3599-1
	25 ml Erlenmeyer Flask	112	3599-2
	50 ml Erlenmeyer Flask	112	3599-3
	125 ml Erlenmeyer Flask	56	3599-4
	250 ml Erlenmeyer Flask	40	3599-5
	300 ml Erlenmeyer Flask	24	3599-6
	500 ml Erlenmeyer Flask	24	3599-7
	1L Erlenmeyer Flask	12	3599-8
	2L Erlenmeyer Flask	12	3599-9
	4L Erlenmeyer Flask	6	3599-10
	6L Erlenmeyer Flask	4	3599-11
	Separatory Funnel (500 ml to 2L)	10	3599-49
	Utility Tray	—	3599-46
	18 x 30" Adjustable Vessel Platform	—	3599-63
	2500 ml Low Form Culture Flask	5	3599-12
36 x 24" (91 x 61 cm)	2800 ml Fernbach Flask	6	3599-13
	50 ml Erlenmeyer Flask	160	3599-52
	125 ml Erlenmeyer Flask	80	3599-53
	250 ml Erlenmeyer Flask	70	3599-54
	500 ml Erlenmeyer Flask	40	3599-56
	1L Erlenmeyer Flask	18	3599-57
	2L Erlenmeyer Flask	15	3599-58
	4L Erlenmeyer Flask	8	3599-59
	6L Erlenmeyer Flask	6	3599-60
	Separatory Funnel (500 ml to 2L)	16	3599-96
	2500 ml Low Form Culture Flask	6	3599-61
	2800 ml Fernbach Flask	8	3599-62

Utility Tray
Model No. 3523-46



11 x 13" Adjustable Vessel Platform
Model No. 3523-49



50 ml Erlenmeyer Flask Platform
Model No. 3524-3



Dedicated Separatory Funnel Platform
Model No. 3524-39



30 x 18" Dual Tiered Platforms,
Model No. 30124
(See Accessories table on page 6.)





MaxQ 2508 shaker
Model No. SHKA2508



MaxQ 2506 shaker
Model No. SHKA2506*

Thermo Scientific Dual Action Orbital and Reciprocating Shakers

Choose Between Single Action Reciprocating or Dual Action Orbital/Reciprocating Shakers

Choose Reciprocating or Orbital Shaking for Increased Flexibility

- Choice of three platforms increases capacity.
- Affordably priced.
- Variable speed control.
- Built-in timer for repeatable results.
- 24-month warranty.

Dual-Action Orbital/Reciprocating Features

- Ideal for growing bacteria, dissolution studies, staining of electrophoresis gels and extractions.
- Provides “back-and-forth” motion or circular orbital motion for versatility to cover a wide range of applications.
 - > Fixed reciprocating stroke length of 0.4 in. (1.2 cm).
 - > Fixed circular orbit of 0.4 in. (1.2 cm).

Reciprocating Features

- Ideal for extractions, mixing blood samples and silver staining of polyacrylamide gels.
- Provides “back-and-forth” motion with an adjustable stroke length of 0.5 to 1.5 in. (1.2 to 3.8 cm).

Operation

- Operates in temperature ranges of 4 to 40°C and humidity conditions of 20 to 80% non-condensing, enabling them to be used in incubators, warm rooms, environmental chambers and refrigerators.

- Interchangeable 11 x 13 in. (27.9 x 33 cm); 18 x 18 in. (45.7 x 45.7 cm) or 18 x 24 in. (45.7 x 60.1 cm) shaking platforms are available to accommodate a variety of labware. (See Accessories.)
- On dual-action models, control lever changes shaking motion while unit is stationary or in operation.

Analog Operating System

- Variable speed control from 40 to 400 rpm (for dual action) and from 10 to 250 rpm (for reciprocating).
- Operate in continuous mode or set timer from 1 to 60 min.
- Metal-locking tab on the speed-control knob prevents speed from increasing or decreasing if control knob is mistakenly bumped.
- Load capacity is 15 lb. (6.8 kg).

Tiered Blood Bag Platform

- A five-tier aluminum platform assembly measuring 13L x 11W x 14H in. (33 x 27.9 x 35.6 cm).
- Distance between platforms is 3.25 in. (8.26 cm.)
- Each of the five platforms is equipped with a white ribbed vinyl mat.
- Mix contents of 10 x 10 in (25.4 x 25.4 cm) bags of platelets used in platelet phoresis applications.

Thermo Scientific Dual-Action Orbital and Reciprocating Shakers

ORDERING INFORMATION

For a complete system order: 1. Shaker, 2. Platform, 3. Clamps

Shaker Options	Speed Range (rpm)	Orbit Diameter Inch (cm)	Max. Load Lb. (kg)	Overall Dimensions Inches (cm)			Shipping Weight Lb. (kg)	Model No. 120V, 50/60 Hz	Model No. 240V, 50/60 Hz
				L	W	H			
MaxQ 2508 – Dual Action Orbital and Reciprocating Shakers									
Analog	40-400	0.4 (1.2)	15 (6.8)	17.4 (44.2)	13.5 (34.3)	7 (17.8)	38 (17.2)	SHKA2508	SHKA2508-1CE
MaxQ 2506 – Reciprocating Shakers									
Analog	10-250	Adjustable from 0.5 to 1.5 (1.2 to 3.8)	15 (6.8)	17.4 (44.2)	13.5 (34.3)	7 (17.8)	27 (12.3)	SHKA2506	SHKA2506-1

REQUIRED ACCESSORIES

MaxQ 2508 and 2506 Series						Model No.
Platforms Choose the platform that best fits your needs.	Universal Platforms – Maximum flexibility for using a mix of different size labware on a single platform. See Universal Clamp Guide for clamp capacities. Purchase clamps separately.			11 x 13" (28 x 33 cm)	Platform without Clamps	30100 ¹
				11 x 13" (28 x 33 cm)	Dual Stacked Platform without Clamps	30125
				18 x 18" (45.7 x 45.7 cm)	Platform without Clamps	30110 ¹
				18 x 18" (45.7 x 45.7 cm)	Dual Stacked Platform without Clamps	30128
				18 x 24" (45.7 x 60.9 cm)	Platform without Clamps	30106
	Dedicated Platforms Clamps come installed to provide maximum capacity.			11 x 13" (28 x 33 cm)	Platform with Clamps	See Dedicated Platforms on p. 7
Clamps	Mix and match clamps for your Universal Platform.			18 x 18" (45.7 x 45.7 cm)	Platform with Clamps	See Dedicated Platforms on p. 7
						See Universal Clamp Guide below

¹Stackable

UNIVERSAL CLAMP GUIDE

Universal Platform Clamps Mix and match to customize the Universal Platform for your unique needs. Clamps sold as individual units.		Clamp Capacity Guide Max. clamp capacity of vessels for the Universal Platform		
		MaxQ 2508 and 2506		
Clamp	Model No.	11 x 13" (28 x 33 cm)	18 x 18" (45.7 x 45.7 cm)	18 x 24" (45.7 x 60.9 cm)
Flask Clamp Starter Kit, includes (1) microplate clamp, (2) 125 ml flask clamps, (4) 250 ml flask clamps, (4) 500 ml flask clamps, (2) 1L flask clamps, (2) 2L flask clamps	30129			
Microplate/Deep-well plate	30175	5	10	15
10 ml Erlenmeyer Flask	30150BI	60	113	157
25 ml Erlenmeyer Flask	30151	60	64	80
50 ml Erlenmeyer Flask	30152BI	30	32	40
125 ml Erlenmeyer Flask	30153	13	32	40
250 ml Erlenmeyer Flask	30154BI	9	16	24
300 ml Erlenmeyer Flask	30155	7	16	20
500 ml Erlenmeyer Flask	30156BI	6	16	20
1L Erlenmeyer Flask	30157BI	4	9	10
2L Erlenmeyer Flask	30158	1	6	5
4L Erlenmeyer Flask	30159	1	4	4
6L Erlenmeyer Flask	30160	1	2	3
2500 ml Low Form Culture Flask	30161	1	1	2
2800 ml Fernbach Flask	30162	1	4	4
Adhesive Flask Mat, 9 x 9" (23 x 23 cm)	300349 ³	–	–	–
Test Tube Racks – Full Size				
10-13 mm, red, 6 x 12 array	30180BI	3	6	8
14-16 mm, orange, 6 x 12 array	30182 ¹	2	4	6
17-20 mm, white, 4 x 10 array	30184	3	5	6
21-25 mm, blue, 4 x 10 array	30186	2	3	4
26-30 mm, green, 3 x 8 array	30188 ²	2	4	6
Microcentrifuge, 1.5 ml, blue, 8 x 12 array	30190	2	5	6
Test Tube Racks – Half Size				
10-13 mm, red, 6 x 6 array	30181	6	12	15
14-16 mm, orange, 6 x 6 array	30183 ¹	4	6	8
17-20 mm, white, 4 x 5 array	30185	4	8	13
21-25 mm, blue, 4 x 4 array	30187	4	6	9
26-30 mm, green, 3 x 3 array	30189 ²	6	9	12
Microcentrifuge, 1.5 ml, blue, 4 x 6 array	30191	4	8	10

¹Fits 15 ml centrifuge tubes ²Fits 50 ml centrifuge tubes ³Can be cut to fit, reusable

MISCELLANEOUS ACCESSORIES

MaxQ 2508 and 2506 Series	Model No.
Adapter Set for stacking two platforms (Models 30100 and 30110 only)	3522-3



Five-Tier Blood Bag Platform
Model No. 3523-51



MaxQ 4450 shaker
Model No. SHKE4450

Thermo Scientific MaxQ 4450 Compact Benchtop Incubated Shakers

Combines Incubated/Refrigerated Temperatures with Orbital Shaker in a Small Footprint

- Holds up to four one liter flasks.
- Requires minimal bench space.
- Choose between two temperature ranges, 5°C above ambient to 80°C or 5°C below ambient to 80°C.
- Clear lid lets you view samples without disturbing internal temperature
- Affordably priced
- Five year warranty on parts, one year labor and *LIFETIME* on drive mechanism

Models Available with Integrated Cooling Coils for Plasmid Purification and Protein Expression in Bacteria

- Achieve temperature ranges from 20°C to 30°C when connected to a circulating chiller.
- Provides a refrigerated atmosphere.

Operation

- Triple eccentric drive handles heavy loads, provides uniform agitation and continuous 24-hour operation, even at high speeds.
- Monitor and control chamber temperature range with $\pm 0.1^\circ\text{C}$ accuracy and $\pm 0.5^\circ\text{C}$ uniformity at 37°C.

Analog Operating System

- Variable speed control from 40 to 400 rpm, controlled by a rotary dial.
- Integrated tachometer monitors and displays speed in rpm to guarantee an accurate setting.
- Easy-to-read LED digital temperature display.
- Operate shaker in continuous mode or set timer from 1 to 60 minutes.

Digital Operating System

- Variable speed control from 15 to 500 rpm.
- Continuous/timed operation from 0.1 hour to 999 hours or 0.1 minute to 999 minutes.
- View speed, operating time and temperature simultaneously on three individual LED displays.
- Visual/audible alarms alert you to temperature deviations. Heat turns off if temperature deviates $\pm 1^\circ\text{C}$ of set point.
- Shaker shuts down and visual/audible alarms signal if unit operates $\pm 10\%$ of set speed, preventing shaker from walking.
- Soft start feature eliminates sudden starts and stops, splashing of vessel contents or wetting of flask closure.
- Retains parameters during power failure and restarts unit automatically after power is restored.

Safety

- Over-temperature safety feature with independent thermostat provides additional backup by controlling heat if main temperature controller fails.
- Safety interlock stops platform motion when lid is opened.

Applications

- Cell culture
- Extraction procedures
- General mixing
- Staining and destaining
- Hybridizations
- Solubility studies
- Plasmid purification
- Bacterial suspensions
- Washing procedures
- Protein expression in bacteria

For a complete system order: 1. Shaker, 2. Platform, 3. Clamps

Shaker Options	Speed Range (rpm)	Orbit Diameter In. (cm)	Max. Load Lb. (kg)	Temperature Range and Accuracy	Overall Dimensions Inches (cm)			Shipping Weight Lb. (kg)	Model No. 120V, 50/60 Hz	Model No. 240V, 50/60 Hz
					L	W	H			
MaxQ 4450 – Incubated Shaker										
Analog	40-400	0.75 (1.9)	35 (15.9)	5°C above ambient to 80°C ±0.1°C at 37°C in flask	27.2 (69.1)	14.1 (35.8)	15.8 (40.1)	77 (35)	SHKA4450	SHKA4450-1CE
Digital	15-500 ±1	0.75 (1.9)	35 (15.9)	5°C above ambient to 80°C ±0.1°C at 37°C in flask	27.2 (69.1)	14.1 (35.8)	15.8 (40.1)	77 (35)	SHKE4450	SHKE4450-1CE
MaxQ 4450 – Incubated Shaker with Cooling Coil (Requires Chiller)										
Analog	40-400	0.75 (1.9)	35 (15.9)	5°C below ambient to 80°C ±0.1°C at 37°C in flask	27.2 (69.1)	14.1 (35.8)	15.8 (40.1)	77 (35)	SHKA4450CC	SHKA4450CC-1CE
Digital	15-500 ±1	0.75 (1.9)	35 (15.9)	5°C below ambient to 80°C ±0.1°C at 37°C in flask	27.2 (69.1)	14.1 (35.8)	15.8 (40.1)	77 (35)	SHKE4450CC	SHKE4450CC-1CE

REQUIRED ACCESSORIES

MaxQ 4450				Model No.
Platforms Choose the platform that best fits your needs.	Universal Platforms – Maximum flexibility for using a mix of different size labware on a single platform. See Universal Clamp Guide for clamp capacities. Purchase clamps separately.		11 x 13" (28 x 33 cm)	Platform without Clamps
	Dedicated Platforms Clamps come installed to provide maximum capacity.		11 x 13" (28 x 33 cm)	Platform with Clamps
Clamps	Mix and match clamps for your Universal Platform.			See Universal Clamp Guide below

UNIVERSAL CLAMP GUIDE

Universal Platform Clamps		Clamp Capacity Guide
Mix and match to customize the Universal Platform for your unique needs. Clamps sold as individual units.		Max. clamp capacity of vessels for the Universal Platform
Clamp	Model No.	MaxQ 4450 11 x 13" (28 x 33 cm)
Flask Clamp Starter Kit, includes (1) microplate clamp, (2) 125 ml flask clamps, (4) 250 ml flask clamps, (4) 500 ml flask clamps, (2) 1L flask clamps, (2) 2L flask clamps	30129	
Microplate/Deep-well plate	30175	5
10 ml Erlenmeyer Flask	30150BI	60
25 ml Erlenmeyer Flask	30151	60
50 ml Erlenmeyer Flask	30152BI	30
125 ml Erlenmeyer Flask	30153	13
250 ml Erlenmeyer Flask	30154BI	9
300 ml Erlenmeyer Flask	30155	7
500 ml Erlenmeyer Flask	30156BI	6
1L Erlenmeyer Flask	30157BI	4
2500 ml Low Form Culture Flask	30161	1
Adhesive Flask Mat, 9 x 9" (23 x 23 cm)	300349 ³	–
Test Tube Racks – Full Size		
10-13 mm, red, 6 x 12 array	30180BI	3
14-16 mm, orange, 6 x 12 array	30182 ¹	2
17-20 mm, white, 4 x 10 array	30184	3
21-25 mm, blue, 4 x 10 array	30186	2
26-30 mm, green, 3 x 8 array	30188 ²	2
Microcentrifuge, 1.5 ml, blue, 8 x 12 array	30190	2
Test Tube Racks – Half Size		
10-13 mm, red, 6 x 6 array	30181	6
14-16 mm, orange, 6 x 6 array	30183 ¹	4
17-20 mm, white, 4 x 5 array	30185	4
21-25 mm, blue, 4 x 4 array	30187	4
26-30 mm, green, 3 x 3 array	30189 ²	6
Microcentrifuge, 1.5 ml, blue, 4 x 6 array	30191	4

¹Fits 15 ml centrifuge tubes ²Fits 50 ml centrifuge tubes ³Can be cut to fit, reusable

DEDICATED PLATFORMS WITH CLAMPS

Clamps come installed to provide maximum capacity			
Platform Size	Description	Capacity	Model No.
11 x 13" (28 x 33 cm)	10 ml Erlenmeyer Flask	60	3523-1
	25 ml Erlenmeyer Flask	30	3523-2
	50 ml Erlenmeyer Flask	30	3523-3
	125 ml Erlenmeyer Flask	15	3523-4
	250 ml Erlenmeyer Flask	10	3523-5
	500 ml Erlenmeyer Flask	6	3523-7
	1L Erlenmeyer Flask	4	3523-8

MISCELLANEOUS ACCESSORIES

MaxQ 4450	Model No.
Upright chiller, 6L reservoir, required to achieve temperatures from 20°C to 30°C, 120V	SHK4450CH
Upright chiller, 6L reservoir, required to achieve temperatures from 20°C to 30°C, 240V	SHK4450CH-1CE



Unwire test tube rack clamps



MaxQ 4000 shaker
Model No. SHKE4000

Thermo Scientific MaxQ 4000 Large Incubated and Refrigerated Shakers

Combines Incubated/ Refrigerated Temperatures in an Orbital Shaker with a Spacious Chamber

- Spacious chamber holds six 2L flasks.
- View speed, time and temperature simultaneously.
- Choose from three temperature ranges.
- Clear lid allows sample viewing without disturbing chamber atmosphere.
- Choice of analog or digital operating systems.
- Five year warranty on parts, one year labor and *LIFETIME* on mechanism.

Operation

- Triple eccentric drive handles heavy loads, provides uniform agitation and continuous 24-hour operation, even at high speeds.
- Monitor and control chamber temperature range with $\pm 0.1^{\circ}\text{C}$ accuracy at 37°C .

Analog Operating System

- Variable speed control from 40 to 400 rpm, controlled by a rotary dial.
- Integrated tachometer monitors and displays speed in rpm to guarantee an accurate setting.
- Easy-to-read LED digital temperature display.
- Operate shaker in continuous mode or set timer from 1 to 60 minutes.

Digital Operating System

- Variable speed control from 15 to 500 rpm.
- Continuous/timed operation from 0.1 hour to 999 hours or 0.1 minute to 999 minutes.
- View speed, operating time and temperature simultaneously on three individual LED displays.

- Visual/audible alarms alert you to temperature deviations. Heat turns off if temperature deviates $\pm 1^{\circ}\text{C}$ of set point.
- Shaker shuts down and visual/audible alarms signal if unit operates $\pm 10\%$ of set speed, preventing shaker from walking.
- User-adjustable speed calibration can be performed using a digital handheld tachometer, where verification is required and protocols can be standardized.
- Unbalanced load sensor stops platform motion when excess vibration is detected and visual/audible alarms signal until condition is corrected.
- Soft start feature eliminates sudden starts and stops, splashing of vessel contents or wetting of flask closure.
- Retains parameters during power failure and restarts automatically after power is restored.

Safety

- Over-temperature safety feature with independent thermostat provides additional backup by controlling heat if main temperature controller fails.
- Safety interlock stops platform motion when lid is opened.

Applications

- Cell culture
- Extraction procedures
- General mixing
- Staining and destaining
- Hybridizations
- Solubility studies
- Plasmid purification
- Bacterial suspensions
- Washing procedures
- Protein expression

For a complete system order: 1. Shaker, 2. Platform, 3. Clamps

Shaker Options	Speed Range (rpm)	Orbit Diameter In. (cm)	Max. Load Lb. (kg)	Temperature Range and Accuracy	Overall Dimensions Inches (cm)			Shipping Weight Lb. (kg)	Model No. 120V, 50/60 Hz	Model No. 240V, 50/60 Hz
MaxQ 4000 – Large Incubated Bench-Top Shaker					L	W	H			
Analog	40-400	0.75 (1.9)	50 (22.7)	10°C above ambient to 60°C ±0.1°C at 37°C in flask	32 (81.3)	22.5 (57.2)	22 (55.9)	167 (75.8)	SHKA4000	SHKA4000-1CE
Digital	15-500 ±1	0.75 (1.9)	50 (22.7)	10°C above ambient to 60°C ±0.1°C at 37°C in flask	32 (81.3)	22.5 (57.2)	22 (55.9)	167 (75.8)	SHKE4000	SHKE4000-1CE
MaxQ 4000 – Large Incubated High Temperature Bench-Top Shaker										
Analog	40-400	0.75 (1.9)	50 (22.7)	10°C above ambient to 80°C ±0.1°C at 37°C in flask	32 (81.3)	22.5 (57.2)	22 (55.9)	167 (75.8)	SHKA4000-5	SHKA4000-6CE
Digital	15-500 ±1	0.75 (1.9)	50 (22.7)	10°C above ambient to 80°C ±0.1°C at 37°C in flask	32 (81.3)	22.5 (57.2)	22 (55.9)	167 (75.8)	SHKE4000-5	SHKE4000-6CE
MaxQ 4000 – Large Incubated and Refrigerated Bench-Top Shaker										
Analog	40-400	0.75 (1.9)	50 (22.7)	15°C below ambient to 60°C ±0.1°C at 37°C in flask	34 (86.4)	22.5 (57.2)	22 (55.9)	212 (96.2)	SHKA4000-7	SHKA4000-8CE
Digital	15-500 ±1	0.75 (1.9)	50 (22.7)	15°C below ambient to 60°C ±0.1°C at 37°C in flask	34 (86.4)	22.5 (57.2)	22 (55.9)	212 (96.2)	SHKE4000-7	SHKE4000-8CE

REQUIRED ACCESORIES

MaxQ 4000				Model No.
Platforms Choose the platform that best fits your needs.	Universal Platforms – Maximum flexibility for using a mix of different size labware on a single platform. See Universal Clamp Guide for clamp capacities. Purchase clamps separately.		18 x 18" (45.7 x 45.7 cm)	Platform without Clamps
	Dedicated Platforms Clamps come installed to provide maximum capacity.		18 x 18" (45.7 x 45.7 cm)	Platform with Clamps
Clamps	Mix and match clamps for your Universal Platform.			See Universal Clamp Guide below

UNIVERSAL CLAMP GUIDE

Universal Platform Clamps		Clamp Capacity Guide
Mix and match to customize the Universal Platform for your unique needs. Clamps sold as individual units.		Max. clamp capacity of vessels for the Universal Platform
Clamp	Model No.	MaxQ 4000 18 x 18" (45.7 x 45.7 cm)
Flask Clamp Starter Kit, includes (1) microplate clamp, (2) 125 ml flask clamps, (4) 250 ml flask clamps, (4) 500 ml flask clamps, (2) 1L flask clamps, (2) 2L flask clamps	30129	
Microplate/Deep-well plate	30175	10
10 ml Erlenmeyer Flask	30150BI	113
25 ml Erlenmeyer Flask	30151	64
50 ml Erlenmeyer Flask	30152BI	32
125 ml Erlenmeyer Flask	30153	32
250 ml Erlenmeyer Flask	30154BI	16
300 ml Erlenmeyer Flask	30155	16
500 ml Erlenmeyer Flask	30156BI	16
1L Erlenmeyer Flask	30157BI	9
2L Erlenmeyer Flask	30158	6
2500 ml Low Form Culture Flask	30161	1
2800 ml Fernbach Flask	30162	4
Adhesive Flask Mat, 9 x 9" (23 x 23cm)	300349 ³	–
Test Tube Racks – Full Size		
10-13 mm, red, 6 x 12 array	30180BI	6
14-16 mm, orange, 6 x 12 array	30182 ¹	4
17-20 mm, white, 4 x 10 array	30184	5
21-25 mm, blue, 4 x 10 array	30186	3
26-30 mm, green, 3 x 8 array	30188 ²	4
Microcentrifuge, 1.5 ml, blue, 8 x 12 array	30190	5
Test Tube Racks – Half Size		
10-13 mm, red, 6 x 6 array	30181	12
14-16 mm, orange, 6 x 6 array	30183 ¹	6
17-20 mm, white, 4 x 5 array	30185	8
21-25 mm, blue, 4 x 4 array	30187	6
26-30 mm, green, 3 x 3 array	30189 ²	9
Microcentrifuge, 1.5 ml, blue, 4 x 6 array	30191	8

¹Fits 15 ml centrifuge tubes ²Fits 50 ml centrifuge tubes ³Can be cut to fit, reusable

DEDICATED PLATFORMS WITH CLAMPS

Clamps come installed to provide maximum capacity			
Platform Size	Description	Capacity	Model No.
18 x 18" (45.7 x 45.7 cm)	10 ml Erlenmeyer Flask	113	3524-1
	25 ml Erlenmeyer Flask	64	3524-2
	50 ml Erlenmeyer Flask	64	3524-3
	125 ml Erlenmeyer Flask	32	3524-4
	250 ml Erlenmeyer Flask	25	3524-5
	300 ml Erlenmeyer Flask	16	3524-6
	500 ml Erlenmeyer Flask	16	3524-7
	1L Erlenmeyer Flask	9	3524-8
	2L Erlenmeyer Flask	5	3524-9
	10 ml Beaker	152	3524-35
	20 ml Beaker	104	3524-36
	30 ml Beaker	104	3524-37
	100 ml Beaker	44	3524-38
	250 ml Beaker	25	3524-39
	400 ml Beaker	25	3524-40
	600 ml Beaker	16	3524-41
	Utility Tray	–	3524-46
	18" x 18" Adjustable Vessel Platform	–	3524-60

MISCELLANEOUS ACCESSORIES

MaxQ 4000	Model No.
Gassing manifold with 8 outlets (factory installed)	SHK4000-8GM

Note: Optional gassing manifold enables direct gassing into flasks for anaerobic cultures.



MaxQ 5000 shaker
Model No. SHKE5000



Using the built-in foot pedal,
you can open the door to
transfer vessels, hands free.

Thermo Scientific MaxQ 5000 Incubated and Refrigerated Floor Shakers

Combines Incubated/Refrigerated Temperatures with an Orbital Shaker for Large Capacity Applications

- Choice of analog or digital operating systems
- Spacious chamber holds four 6L flasks
- Wide temperature range, 10°C above ambient to 60°C on incubated models and 15°C below ambient to 60°C on refrigerated models
- Easy-access drain system with quick disconnect fitting permits easy clean up of spills
- Drip pan under platform contains spills
- Foot pedal opens lid for hands free operation
- Retractable foot casters allow easy positioning in the lab
- Observe flask contents without opening the door through a large viewing window
- Access ports for probes, thermocouples or sensors provided through side of cabinet wall
- Five year warranty on parts, one year labor and *LIFETIME* on drive mechanism

Operation

- Triple eccentric drive handles heavy loads, provides uniform agitation and continuous 24-hour operation, even at high speeds.
- Monitor and control chamber temperature range with $\pm 0.1^\circ\text{C}$ accuracy at 37°C.

Analog Operating Systems

- Variable speed control from 40 to 400 rpm, controlled by a rotary dial.
- Integrated tachometer monitors and displays speed in rpm to guarantee an accurate setting.
- Easy-to-read LED digital temperature display.
- Operates in continuous mode or set timer from 1 to 60 min.

Digital Operating Systems

- Variable speed control from 15 to 500 rpm.

- Continuous/timed operation from 0.1 hour to 999 hours or 0.1 minute to 999 minutes.
- View speed, operating time and temperature simultaneously on three individual LED displays.
- Visual/audible alarms alert you to temperature deviations. Heat turns off if temperature deviates $\pm 1^\circ\text{C}$ of set point.
- Shaker shuts down and visual/audible alarms signal if unit operates $\pm 10\%$ of set speed, preventing shaker from walking.
- User-adjustable speed calibration can be performed using a digital handheld tachometer, where verification is required and protocols can be standardized.
- Unbalanced load sensor stops platform motion when excess vibration is detected and visual/audio alarms signal until condition is corrected.
- Soft start feature eliminates sudden starts and stops, splashing of vessel contents or wetting of flask closure.
- Retains parameters during power failure and restarts unit automatically after power is restored.

Safety

- Over-temperature safety feature with independent thermostat provides additional backup by controlling heat if main temperature controller fails.

Applications

- Cell culture
- Solubility studies
- Extraction procedures
- Plant growth
- General mixing
- Protein expression
- Bacterial suspensions
- Staining and destaining
- Washing procedures
- Hybridizations
- Plasmid purification

For a complete system order: 1. Shaker, 2. Platform, 3. Clamps

Shaker Options	Speed Range (rpm)	Orbit Diameter In. (cm)	Max. Load Lb. (kg)	Temperature Range and Accuracy	Overall Dimensions Inches (cm)			Shipping Weight Lb. (kg)	Model No. 120V, 50/60 Hz	Model No. 240V, 50/60 Hz
MaxQ 5000 – Large Incubated Floor Shaker					L	W	H			
Analog	40-400	1.0 (2.54)	75 (34)	10°C above ambient to 60°C ±0.1°C at 37°C in flask	32 (81.3)	41 (104.1)	41 (104.1)	476 (215.9)	SHKA5000	SHKA5000-1CE
Digital	15-500 ±1	1.0 (2.54)	75 (34)	10°C above ambient to 60°C ±0.1°C at 37°C in flask	32 (81.3)	41 (104.1)	41 (104.1)	476 (215.9)	SHKE5000	SHKE5000-1CE
MaxQ 5000 – Large Incubated and Refrigerated Floor Shaker										
Analog	40-400	1.0 (2.54)	75 (34)	15°C below ambient to 60°C ±0.1°C at 37°C in flask	32 (81.3)	41 (104.1)	41 (104.1)	512 (232.2)	SHKA5000-7	SHKA5000-8CE
Digital	15-500 ±1	1.0 (2.54)	75 (34)	15°C below ambient to 60°C ±0.1°C at 37°C in flask	32 (81.3)	41 (104.1)	41 (104.1)	512 (232.2)	SHKE5000-7	SHKE5000-8CE

REQUIRED ACCESORIES

MaxQ 5000				Model No.
Platforms Choose the platform that best fits your needs.	Universal Platforms – Maximum flexibility for using a mix of different size labware on a single platform. See Universal Clamp Guide for clamp capacities. Purchase clamps separately.	30 x 18" (76 x 45.7 cm)	Platform without Clamps	30115BI
	Dedicated Platforms Clamps come installed to provide maximum capacity.	30 x 18" (76 x 45.7 cm)	Platform with Clamps	See Dedicated Platforms below
Clamps	Mix and match clamps for your Universal Platform.			See Universal Clamp Guide below

UNIVERSAL CLAMP GUIDE

Universal Platform Clamps Mix and match to customize the Universal Platform for your unique needs. Clamps sold as individual units.		Clamp Capacity Guide Max. clamp capacity of vessels for the Universal Platform
Clamp	Model No.	MaxQ 5000 30 x 18" (76 x 45.7 cm)
Flask Clamp Starter Kit, includes (1) microplate clamp, (2) 125 ml flask clamps, (4) 250 ml flask clamps, (4) 500 ml flask clamps, (2) 1L flask clamps, (2) 2L flask clamps	30129	
Microplate/Deep-well plate	30175	18
10 ml Erlenmeyer Flask	30150BI	112
25 ml Erlenmeyer Flask	30151	112
50 ml Erlenmeyer Flask	30152BI	112
125 ml Erlenmeyer Flask	30153	44
250 ml Erlenmeyer Flask	30154BI	24
300 ml Erlenmeyer Flask	30155	20
500 ml Erlenmeyer Flask	30156BI	18
1L Erlenmeyer Flask	30157BI	12
2L Erlenmeyer Flask	30158	6
4L Erlenmeyer Flask	30159	6
6L Erlenmeyer Flask	30160	3
2500 ml Low Form Culture Flask	30161	3
2800 ml Fernbach Flask	30162	5
Adhesive Flask Mat, 9 x 9" (23 x 23 cm)	300349 ³	–
Test Tube Racks – Full Size		
10-13 mm, red, 6 x 12 array	30180BI	13
14-16 mm, orange, 6 x 12 array	30182 ¹	7
17-20 mm, white, 4 x 10 array	30184	9
21-25 mm, blue, 4 x 10 array	30186	7
26-30 mm, green, 3 x 8 array	30188 ²	7
Microcentrifuge, 1.5 ml, blue, 8 x 12 array	30190	8
Test Tube Racks – Half Size		
10-13 mm, red, 6 x 6 array	30181	21
14-16 mm, orange, 6 x 6 array	30183 ¹	10
17-20 mm, white, 4 x 5 array	30185	18
21-25 mm, blue, 4 x 4 array	30187	10
26-30 mm, green, 3 x 3 array	30189 ²	15
Microcentrifuge, 1.5 ml, blue, 4 x 6 array	30191	14

¹Fits 15 ml centrifuge tubes ²Fits 50 ml centrifuge tubes ³Can be cut to fit, reusable

MISCELLANEOUS ACCESSORIES

MaxQ 5000	Model No.
Stainless steel shelf for chamber – L x W 33.25 x 4.0" (84.5 x 10.2 cm)	SHK5000-6
Gassing manifold with 8 outlets (factory installed)	SHK5000-8GM
Gassing manifold with 16 outlets (factory installed)	SHK5000-16GM

Note: Optional gassing manifold enables direct gassing into flasks for anaerobic cultures.



Easy-access drain system offers convenience in draining and disinfecting the system.

Retractable foot casters allow easy manipulation in lab.

DEDICATED PLATFORMS WITH CLAMPS

Clamps come installed to provide maximum capacity			
Platform Size		Capacity	Model No.
30 x 18" (76.2 x 45.7 cm)	10 ml Erlenmeyer Flask	112	3599-1
	25 ml Erlenmeyer Flask	112	3599-2
	50 ml Erlenmeyer Flask	112	3599-3
	125 ml Erlenmeyer Flask	56	3599-4
	250 ml Erlenmeyer Flask	40	3599-5
	300 ml Erlenmeyer Flask	24	3599-6
	500 ml Erlenmeyer Flask	24	3599-7
	1L Erlenmeyer Flask	12	3599-8
	2L Erlenmeyer Flask	12	3599-9
	4L Erlenmeyer Flask	6	3599-10
	6L Erlenmeyer Flask	4	3599-11
	2500 ml Low Form Culture Flask	5	3599-12
	2800 ml Fernbach Flask	6	3599-13
	Utility Tray	–	3599-46
	Adjustable Vessel Platform	–	3599-63



MaxQ 6000 shaker
Model No. SHKE6000



Thermo Scientific MaxQ 6000 Incubated and Refrigerated Stackable Shakers

Combines Orbital Shaking with General Purpose Incubation for Added Versatility

- Available in incubated or refrigerated models.
- Units can be stacked two high on the floor with the stacking kit accessory.
- Two adjustable-height shelves provide added storage.
- Large viewing window and internal light offer sample visibility.
- View temperature, speed and time simultaneously on three individual displays.
- Door can be hinged from the right or left by the user for convenient placement in lab.
- Five year warranty on parts, one year labor and *LIFETIME* on mechanism.

Product Description

- Choose between two temperature ranges.
- Corrosion-resistant stainless-steel chamber accommodates a variety of 18 x 18 in. (45.7 x 45.7 cm) universal and dedicated platforms.
- Durable powder-coated, cold-rolled steel exterior construction.
- Electrical outlet inside chamber provides power for safe operation of shakers, stirrers or rotators.

Digital Operating System

- Triple eccentric drive handles heavy loads, provides uniform agitation and continuous 24-hour operation, even at high speeds.
- Monitor and control chamber temperature over complete range with $\pm 0.1^{\circ}\text{C}$ accuracy at 37°C .
- Variable speed control from 15 to 500 rpm.
- Continuous/timed operation from 0.1 hour to 999 hours or 0.1 minute to 999 minutes.
- View speed, operating time and temperature simultaneously on three individual LED displays.

- Visual/audible alarms alert you to temperature deviations. Heat turns off if temperature deviates $\pm 1^{\circ}\text{C}$ of set point.
- Shaker shut down and visual/audible alarms signal if unit operates $\pm 10\%$ of set speed, preventing shaker from walking.
- User-adjustable speed calibration can be performed using a digital handheld tachometer, where verification is required and protocols can be standardized.
- Unbalanced load sensor stops platform motion when excess vibration is detected visual/audio alarms signal until condition is corrected.
- Soft start feature eliminates sudden starts and stops, splashing of vessel contents or wetting of flask closure.
- Retains parameters during power failure and restarts unit automatically after power is restored.

Safety

- Over-temperature safety feature with independent thermostat provides additional backup by controlling heat if main temperature controller fails.
- Safety interlock stops shaking motion when the door is open.

Applications

- Bacterial suspensions
- Solubility studies
- Extraction procedures
- General mixing
- Staining and destaining
- Hybridizations
- Diagnostic test
- Washing procedures
- Protein expression
- Plasmid purification

For a complete system order: 1. Shaker, 2. Platform, 3. Clamps

Shaker Options	Speed Range (rpm)	Orbit Diameter In. (cm)	Max. Load Lb. (kg)	Temperature Range and Accuracy	Temperature Uniformity	Overall Dimensions Inches (cm)			Shipping Weight Lb. (kg)	Model No. 120V	Model No. 240V
MaxQ 6000 – Large Stackable Incubated Floor Shaker						L	W	H			
Digital	15-500 ±1 (unstacked) 15-300 ±1 (stacked)	0.75 (1.9)	35 (15.9)	10°C above ambient to 80°C, ±0.1°C at 37°C in flask	±0.5°C at 37°C in flask	33 (83.8)	27 (69.9)	40.5 (102.9)	330 (150)	SHKE6000 (60 Hz)	SHKE6000-1CE (50/60 Hz)
MaxQ 6000 – Large Stackable Incubated and Refrigerated Floor Shaker						L	W	H			
Digital	15-500 ±1 (unstacked) 15-300 ±1 (stacked)	0.75 (1.9)	35 (15.9)	15°C below ambient to 80°C, ±0.1°C at 37°C in flask	±0.5°C at 37°C in flask	33 (83.8)	27 (69.9)	40.5 (102.9)	430 (195)	SHKE6000-7 (60 Hz)	SHKE6000-8CE (50 Hz)

REQUIRED ACCESORIES

MaxQ 6000				Model No.
Platforms Choose the platform that best fits your needs.	Universal Platforms – Maximum flexibility for using a mix of different size labware on a single platform. See Universal Clamp Guide for clamp capacities. Purchase clamps separately.	18 x 18" (45.7 x 45.7 cm)	Platform without Clamps	30110
		18 x 18" (45.7 x 45.7 cm)	Dual Stacked Platform without Clamps	30128
	Dedicated Platforms Clamps come installed to provide maximum capacity.	18 x 18" (45.7 x 45.7 cm)	Platform with Clamps	See Dedicated Platforms below
Clamps	Mix and match clamps for your Universal Platform.			See Universal Clamp Guide below

UNIVERSAL CLAMP GUIDE

Universal Platform Clamps		Clamp Capacity Guide
Mix and match to customize the Universal Platform for your unique needs. Clamps sold as individual units.		Max. clamp capacity of vessels for the Universal Platform
Clamp	Model No.	MaxQ 6000 18 x 18" (45.7 x 45.7 cm)
Flask Clamp Starter Kit, includes (1) microplate clamp, (2) 125 ml flask clamps, (4) 250 ml flask clamps, (4) 500 ml flask clamps, (2) 1L flask clamps, (2) 2L flask clamps	30129	
Microplate/Deep-well plate	30175	10
10 ml Erlenmeyer Flask	30150BI	113
25 ml Erlenmeyer Flask	30151	64
50 ml Erlenmeyer Flask	30152BI	32
125 ml Erlenmeyer Flask	30153	32
250 ml Erlenmeyer Flask	30154BI	16
300 ml Erlenmeyer Flask	30155	16
500 ml Erlenmeyer Flask	30156BI	16
1L Erlenmeyer Flask	30157BI	9
2L Erlenmeyer Flask	30158	6
4L Erlenmeyer Flask	30159	4
6L Erlenmeyer Flask	30160	2
2500 ml Low Form Culture Flask	30161	1
2800 ml Fernbach Flask	30162	4
Adhesive Flask Mat, 9 x 9" (23 x 23 cm)	300349³	–
Test Tube Rack – Full Size		
10-13 mm, red, 6 x 12 array	30180BI	6
14-16 mm, orange, 6 x 12 array	30182¹	4
17-20 mm, white, 4 x 10 array	30184	5
21-25 mm, blue, 4 x 10 array	30186	3
26-30 mm, green, 3 x 8 array	30188²	4
Microcentrifuge, 1.5 ml, blue, 8 x 12 array	30190	5
Test Tube Racks – Half Size		
10-13 mm, red, 6 x 6 array	30181	12
14-16 mm, orange, 6 x 6 array	30183¹	6
17-20 mm, white, 4 x 5 array	30185	8
21-25 mm, blue, 4 x 4 array	30187	6
26-30 mm, green, 3 x 3 array	30189²	9
Microcentrifuge, 1.5 ml, blue, 4 x 6 array	30191	8

¹Fits 15 ml centrifuge tubes ²Fits 50 ml centrifuge tubes ³Can be cut to fit, reusable

DEDICATED PLATFORMS WITH CLAMPS

Clamps come installed to provide maximum capacity			
Platform Size	Description	Capacity	Model No.
18 x 18" (45.7 x 45.7 cm)	10 ml Erlenmeyer Flask	113	3524-1
	25 ml Erlenmeyer Flask	64	3524-2
	50 ml Erlenmeyer Flask	64	3524-3
	125 ml Erlenmeyer Flask	32	3524-4
	250 ml Erlenmeyer Flask	25	3524-5
	300 ml Erlenmeyer Flask	16	3524-6
	500 ml Erlenmeyer Flask	16	3524-7
	1L Erlenmeyer Flask	9	3524-8
	2L Erlenmeyer Flask	5	3524-9
	10 ml beaker	152	3524-35
	20 ml beaker	104	3524-36
	30 ml beaker	104	3524-37
	100 ml beaker	44	3524-38
	250 ml beaker	25	3524-39
	400 ml beaker	25	3524-40
	600 ml beaker	16	3524-41
	Utility Tray	–	3524-46

OPTIONAL ACCESSORIES

MaxQ 6000	Model No.
Stacking Kit for additional MaxQ 6000 shaker	SHK6000-10
Adapter set for stacking two platforms	3522-3
Seismic Restraint	SHK6000-20



MaxQ 8000 shaker
Model No. SHKE8000



Thermo Scientific MaxQ 8000 Incubated and Refrigerated Stackable Shakers

Can be Stacked Two to Three High on the Floor for Space Savings

- Choose from two temperature ranges to fulfill a number of molecular biology applications.
- HEPA filter ensures air inside the chamber remains clean and reduces cross contamination improving culturing conditions.
- Slide out platform provides convenient 100% sample access.
- Crevice-free Type 304 stainless steel chamber with coved corners and built-in drain keeps spills within the work area and promotes easy cleaning.
- Chamber is tall enough to accommodate 2L Erlenmeyer flasks.
- Top platform height is under 61.0 in. (154.9 cm) when units are stacked three high, ensuring ease-of-use and convenient accessibility.

- Easy to clean platforms are constructed of 5/16 in., heavy duty brushed anodized aluminum, which does not chip or rust.
- Fold-down door with ergonomically designed door handle, large quick-release base (included), and 29.5 x 18 in. (74.9 x 45.7 cm) dedicated or universal platforms accommodate a variety of vessels for versatility.
- Large viewing window and internal xenon light allow sample visibility minimizing the need to open the chamber door.
- Shaker door features a magnetic gasket for a tight seal, pneumatic dampers for smoother controlled opening, and hinges with counter balance springs to ease door closing.
- Electronic components and HEPA filter are easily accessed from the front of the unit, eliminating the need to move the shaker during regular maintenance or service.
- Heavy-gauge cold-rolled steel exterior is designed to safely support units stacked three high.
- Five year warranty on parts, one year on labor and lifetime* on drive mechanism**.

Digital Operating System

- Triple counterbalanced mechanism provides optimum handling of full or unbalanced loads, regardless of flask placement.
- Heavy-duty eccentric drive mechanism allows extended speed ranges from 25 to 400 rpm, +/-1 rpm with minimal vibration, even when shakers are stacked three high.

For a complete system order: 1. Shaker, 2. Platform, 3. Clamps

Shaker Options	Speed Range (rpm)	Orbit Diameter In. (cm)	Max. Load Lb. (kg)	Temperature Range and Accuracy	Temperature Uniformity	Overall Dimensions Inches (cm)			Shipping Weight Lb. (kg)	Model No. 120V, 60 Hz	Model No. 230V, 50 Hz
MaxQ 8000 – Stackable Incubated Shaker						L	W	H			
Digital	25-400 ±1	1.0 (2.54)	36 (16)	10°C above ambient to 60°C ±0.15°C at 37°C in flask	±0.3°C at 37°C	33.3 (84.6)	46.5 (118.1)	25 (63.5)	658 (298.5)	SHKE8000	SHKE8000-1CE
MaxQ 8000 – Stackable Incubated and Refrigerated Shaker						L	W	H			
Digital	25-400 ±1	1.0 (2.54)	36 (16)	20°C below ambient to 60°C ±0.15°C at 37°C in flask	±0.3°C at 37°C	33.3 (84.6)	56.5 (143.5)	25 (63.5)	723 (328)	SHKE8000-7	SHKE8000-8CE

REQUIRED ACCESSORIES

MaxQ 8000				Model No.
Platforms Choose the platform that best fits your needs.	Universal Platforms – Maximum flexibility for using a mix of different size labware on a single platform. See Universal Clamp Guide for clamp capacities. Purchase clamps separately.	29.5 x 18" (74.9 x 45.7 cm)	Platform without Clamps	238061
	Dedicated Platforms Clamps come installed to provide maximum capacity.	29.5 x 18" (74.9 x 45.7 cm)	Platform with Clamps	See Dedicated Platforms on page 21
Clamps	Mix and match clamps for your Universal Platform.			See Universal Clamp Guide on page 20 and 21

- Heavy-duty permanently lubricated bearings provide long life. Cool running, brushless 1/3 HP, DC motor ensures continuous maintenance-free operation.
- All microprocessor functions can be calibrated easily through the keypad. Sealed control panel minimizes concern about accidental spills.
- Audio/visual, high/low rpm tracking alarms alert you if speed deviations occur. Alarms can be silenced temporarily and ring back as a reminder of unresolved alarm conditions.
- Non-volatile memory saves settings during a power outage and automatically restarts the unit after power is restored.
- Controlled acceleration circuitry provides smooth start-up and stopping to eliminate splashing and wetting of flask closures.
- RS232 port is standard and permits computer interface and monitoring of time, temperature and speed.
- For long-term documentation an optional free standing chart recorder is available.
- Standard remote alarm contacts allow convenient monitoring of alarm conditions from another location.

Safety

- Flip-down handle on the quick-release base prevents the shaker from running if the platform is not secured.
- Slide-out platform features a large mounting surface area and is secured to ensure a smooth, stable motion. Platform motion is continuously monitored independently of motor operation for added protection.

Applications

- Growth of bacteria or yeast
- Dissolution studies
- Staining and destaining of electrophoresis gels
- Extractions
- Protein expression
- Growth of insect cells
- Hybridizations
- Protein purification



Models SHKE8000
(SHKE8000-1CE)

* Lifetime = 10 years

** Extended warranties are dependent on the units being maintained regularly as stated in the operation and service manuals.

Thermo Scientific MaxQ 8000 Accessories

ORDERING INFORMATION

For a complete system order: 1. Shaker, 2. Platform, 3. Clamps

UNIVERSAL CLAMP GUIDE

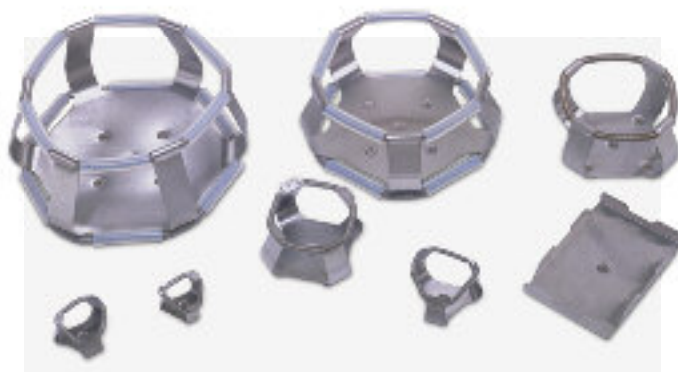
Universal Platform Clamps		Clamp Capacity Guide
Mix and match to customize the Universal Platform for your unique needs. Clamps sold as individual units.		Max. clamp capacity of vessels for the Universal Platform
Clamp	Model No.	
Flask Clamp Starter Kit, includes (1) microplate clamp, (2) 25 ml flask clamps, (2) 50 ml flask clamps, (2) 125 ml flask clamps, (4) 250/300 ml flask clamps, (4) 500 ml flask clamps, (2) 1L flask clamps, (2) 2L flask clamps and replacement screws	236099	—
Microplate	236025	18
25 ml Erlenmeyer Flask	236010	91
50 ml Erlenmeyer Flask	236011	91
125 ml Erlenmeyer Flask	236012	39
250/300 ml Erlenmeyer Flask	236013	30
500 ml Erlenmeyer Flask	236014	24
1L Erlenmeyer Flask	236015	12
2L Erlenmeyer Flask	236016	11
2800 ml Fernback Flask	236019	6
Adhesive Flask Mat, 9 x 9" (23 x 23 cm)	300349 ³	—
Replacement Screws (50) #10-24 x 5/16" countersink Phillips head screws for clamps and (6) 1/4-20 x 3/4" countersink flat head socket for platforms and (2) 1/4"-20 x 1-1/2" hex socket set screws	194046	
Universal Test Tube Rack with Holder		
Universal adjustable angle test tube rack holder	600088	—
Test tube rack, 72 places, 10-13 mm (3-7 ml) tubes	950040 ²	5 angled
Test tube rack, 40 places, 16-20 mm (10-20 ml) tubes	950060 ²	4 angled
Test tube rack, 40 places, 21-25 mm (30 ml) tubes	600074 ²	4 angled
Test tube rack, 24 places, 26-30 mm (50 ml) tubes	600075 ²	4 angled
Adjustable Test Tube Racks with Holder		
Adjustable angle test tube rack holder with test tube rack, 72 places, 10-13 mm (3-7 ml) tubes	600076 ⁴	5 angled
Adjustable angle test tube rack holder with test tube rack, 40 places, 16-20 mm (10-20 ml) tubes	600077 ⁴	4 angled
Adjustable angle test tube rack holder with test tube rack, 40 places, 21-25 mm (30 ml) tubes	600078 ⁴	4 angled
Adjustable angle test tube rack holder with test tube rack, 24 places, 26-30 mm (50 ml) tubes	600079 ⁴	4 angled
Vial/Tube Inserts		
Pack of 5 vial/tube inserts, perforated for (3) 50 ml tubes, (3) 20 ml tubes, and (8) 1.5–2 ml vials (Requires 1L Erlenmeyer Flask Clamp)	161033	3 x 50 ml tubes, 3 x 20 ml tubes and 8 x 1.5/2.0 ml vials

¹Shaken at a 15 degree angle

²Requires 600088 or a dedicated adjustable angle test tube rack holder of the corresponding size

³Can be cut to fit, reusable

⁴Includes rack holder



The universal test tube rack holder can be adjusted to fit any of the four available test tube rack sizes. Universal design requires the separate purchase of a test tube rack.

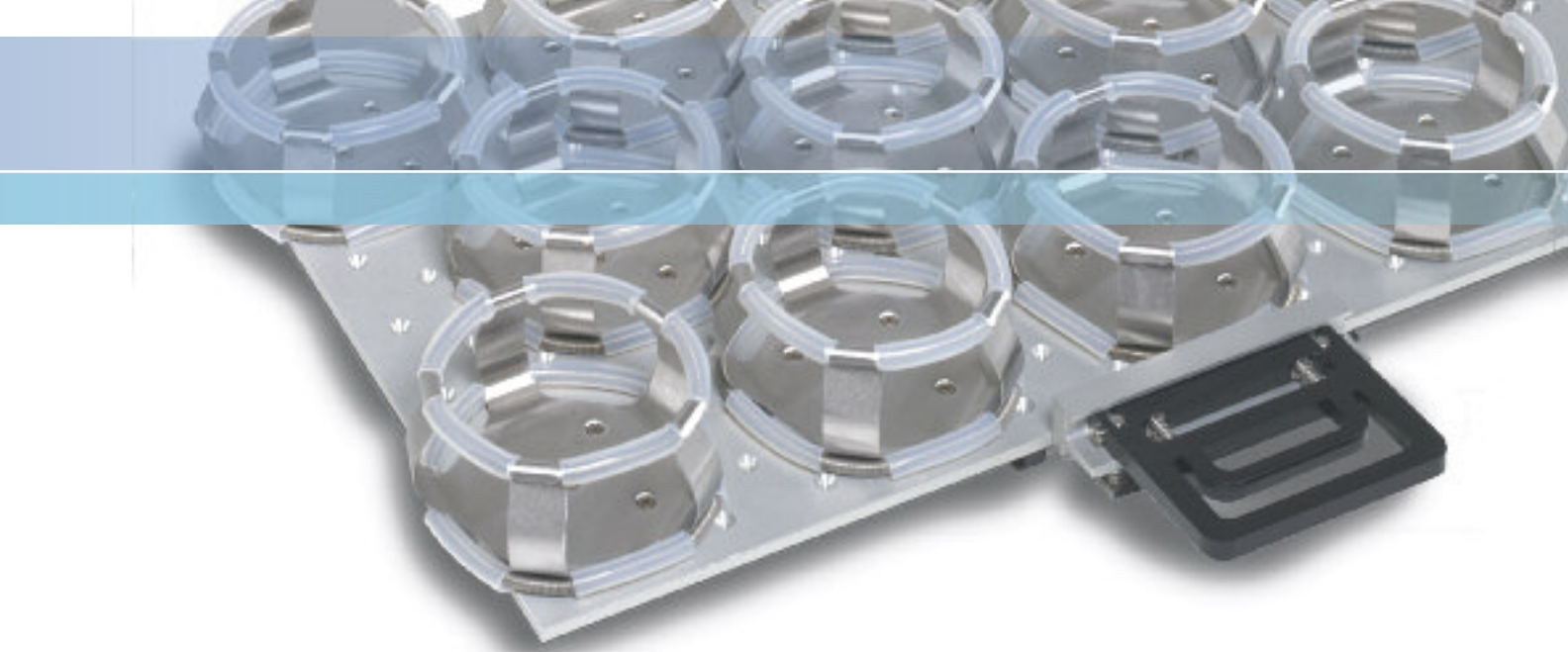


Adjustable test tube rack holders can be used only with their corresponding rack size. This design includes one test tube rack each.



VIAL/TUBE INSERTS FOR 1 LITER FLASK CLAMPS

Flexible, reusable, closed-cell foam Vial/Tube Inserts are ideal for shaking a mix of tube and vial sizes in temperature ranges up to 70°C (158°F). The insert fits snugly into a 1 liter flask clamp, repels spills, and is easy to clean.



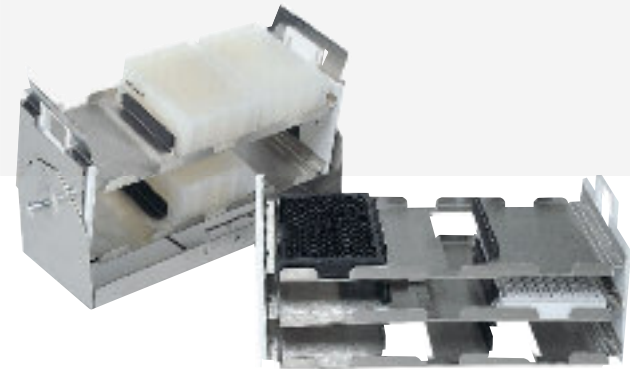
UNIVERSAL CLAMP GUIDE

Universal Platform Clamps		Clamp Capacity Guide
Mix and match to customize the Universal Platform for your unique needs. Clamps sold as individual units.		Max. clamp capacity of vessels for the Universal Platform
	Model No.	
Microplate Rack Inserts		
Microplate rack insert for standard plates, 3 shelves (Requires Universal adjustable angle test tube rack holder)	600090	7 racks, 63 plates
Microplate rack insert for deep-well plates, 2 shelves (Requires Universal adjustable angle test tube rack holder)	600089 ¹	5 racks, 30 plates
Replacement Screws		
Replacement Screws (50) #10-24 x 5/16" countersink Phillips headscrews for mounting tube holders to platform	194024	—

¹Shaken at a 15 degree angle

MICROPLATE RACK INSERTS

Our Microplate Rack Inserts are available for the Dedicated Adjustable Angle Test Tube Rack Holder (50 ml)-No. 600079- and the Universal Adjustable Angle Test Tube Rack Holder-No. 600088. You can increase your microplate shaking capacity, shake deepwell format plates at an angle, and remove many plates from the shaker at once for quick and easy transport to your benchtop.

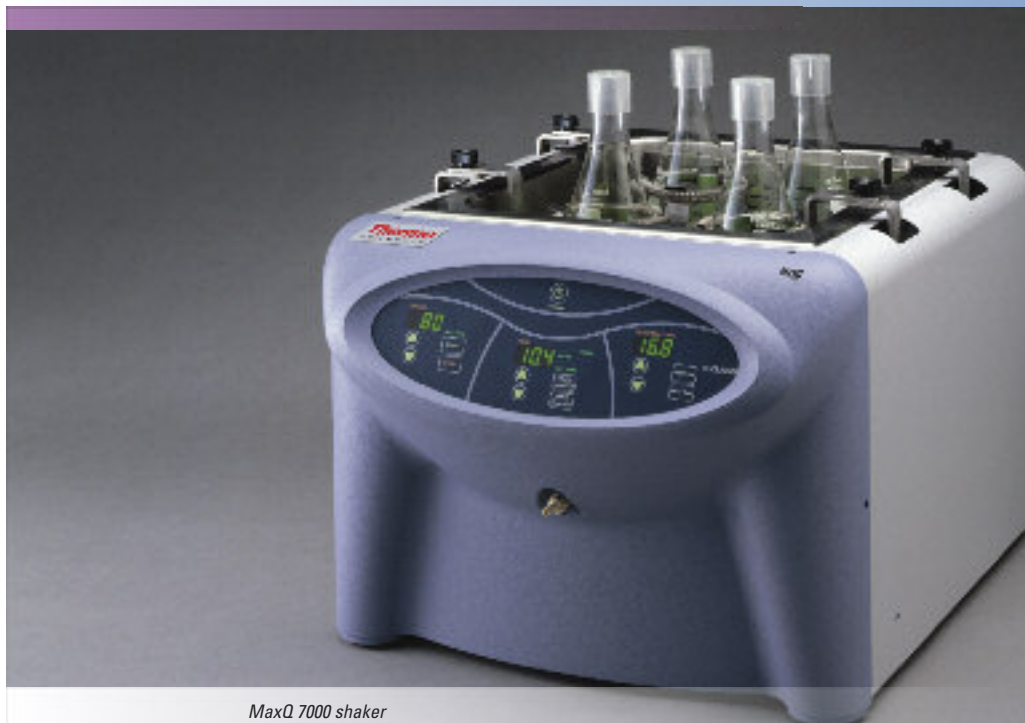


DEDICATED PLATFORMS WITH CLAMPS

Clamps come installed to provide maximum capacity			
Platform Size	Description	Capacity	Model No.
29.5 x 18" (74.9 x 45.7 cm)	Clamps		
	25 ml Erlenmeyer Flask	91	238066
	50 ml Erlenmeyer Flask	91	238067
	125 ml Erlenmeyer Flask	61	238068
	250/300 ml Erlenmeyer Flask	30	238069
	250/300 ml Erlenmeyer Flask	40	238070
	500 ml Erlenmeyer Flask	24	238071
	1L Erlenmeyer Flask	15	238072
	2L Erlenmeyer Flask	12	238073
	2800 ml Fernbach Flask	6	238074

OPTIONAL ACCESSORIES

		Model No.
Stand for one Stackable Shaker 45.5"W x 29.6"H x 35.3"D (115.6 x 75.2 x 89.7 cm); 30.6" (77.7 cm) max. height with leveling feet extended		194222
Stand for two Stackable Shakers 45.5"W x 11.8"H x 30.5"D (115.6 x 30.0 x 77.5 cm); 12.8" (32.5 cm) max. height with leveling feet extended		194223
Door Glass Cover Prevents light from entering through window		194224
7 Day Recorder 0-100C, 6"	115V, 50/60 Hz	201126
	220V, 50/60 Hz	201127
Chart Paper, 50 sheet per box		197075
HEPA filter, replacement		760440
Sensaphone® Telephone Dialing System Alarm system that will notify user via the telephone	Four Channel, 120V/60 Hz	400047
	Eight Channel, 120V/60 Hz	400134
System Monitor/Alarm Interfaces with as many as 24 products/channels monitoring conditions up to 2000 ft. (609.6 m) away		1535



MaxQ 7000 shaker
Model No. SHKE7000

Thermo Scientific MaxQ 7000 Water Bath Shakers

Provides Excellent Temperature Uniformity with Front Access Drain System

- Easy access drain with quick disconnect located in the front of the cabinet for convenience in draining and disinfecting
- Alarm alerts operator in case of low water level.
- Temperature range of 5°C above ambient to 65°C.
- Prevent heat loss and minimize evaporation with use of optional covers.
- Minimize splashing and turbulence in chamber with twin baffles even at high speeds.
- Optional cooling coil extends the range of applications to near and below ambient.
- Five year warranty on parts, one year labor and *LIFETIME* on drive mechanism.

Operation

- Triple eccentric drive that handles heavy loads, provides uniform agitation and enables continuous 24-hour operation, even at high speeds.
- Monitored and controlled temperature with accuracy of $\pm 0.2^{\circ}\text{C}$ at 37°C in flask.

Analog Operating System

- Variable speed control from 40 to 400 rpm, controlled by a rotary dial.
- Integrated tachometer monitors and displays speed in rpm to guarantee an accurate setting.
- Easy-to-read LED digital temperature display.
- Operate shaker in continuous mode or set timer from 1 to 60 minutes.

Digital Operating System

- Variable speed control from 15 to 500 rpm.
- Continuous and timed operation from 0.1 hour up to 999 hours or 0.1 minute to 999 minutes.

- View speed, operating time and temperature simultaneously on three individual LED displays.
- Visual/audible alarms alert you to temperature deviations and low water levels. Heat turns off if temperature deviates $\pm 1^{\circ}\text{C}$ of setpoint.
- Shaker shutdown and visual/audible alarms signal if unit operates $\pm 10\%$ of set speed, preventing shaker from walking.
- User-adjustable speed calibration can be performed using a digital handheld tachometer, where verification is required and protocols can be standardized.
- Unbalanced load sensor stops platform motion when excess vibration is detected and visual/audio alarms signal until condition is corrected.
- Soft start feature eliminates sudden starts and stops, splashing of vessel contents or wetting of flask closure.
- Retains parameters during power failure and restarts automatically after power is restored.

Safety

- Over-temperature safety feature with independent thermostat provides additional backup by controlling heat if main temperature controller fails.

Applications

- Cell culture
- Solubility studies
- Extraction procedures
- Diagnostic tests
- General mixing
- Bacterial suspensions
- Staining and destaining
- Washing procedures
- Hybridization

For a complete system order: 1. Shaker, 2. Platform, 3. Clamps

Shaker Options	Speed Range (rpm)	Orbit Diameter In. (cm)	Max. Load Lb. (kg)	Temperature Range and Accuracy	Overall Dimensions Inches (cm)			Shipping Weight Lb. (kg)	Model No. 120V, 50/60 Hz	Model No. 240V, 50/60 Hz
					L	W	H			
MaxQ 7000 – Water Bath Shaker										
Analog	40-400	0.50 (1.27)	35 (15.9)	5°C above ambient to 65°C ±0.2°C at 37°C in flask	25 (63.5)	21.5 (54.6)	18 (45.7)	107 (48.5)	SHKA7000	SHKA7000-1CE
Digital	15-500 ±1	0.50 (1.27)	35 (15.9)	5°C above ambient to 65°C ±0.2°C at 37°C in flask	25 (63.5)	21.5 (54.6)	18 (45.7)	107 (48.5)	SHKE7000	SHKE7000-1CE

REQUIRED ACCESORIES

MaxQ 7000				Model No.
Platforms Choose the platform that best fits your needs.	Universal Platforms – Maximum flexibility for using a mix of different size labware on a single platform. See Universal Clamp Guide for clamp capacities. Purchase clamps separately.		11 x 13" (28 x 33 cm)	Platform without Clamps
	Dedicated Platforms Clamps come installed to provide maximum capacity.		11 x 13" (28 x 33 cm)	Platform with Clamps
Clamps	Mix and match clamps for your Universal Platform.			See Universal Clamp Guide below
				See Dedicated Platforms below

UNIVERSAL CLAMP GUIDE

Universal Platform Clamps Mix and match to customize the Universal Platform for your unique needs. Clamps sold as individual units.		Clamp Capacity Guide Max. clamp capacity of vessels for the Universal Platform
Clamp	Model No.	MaxQ 7000 11 x 13" (28 x 33 cm)
Flask Clamp Starter Kit, includes (1) microplate clamp, (2) 125 ml flask clamps, (4) 250 ml flask clamps, (4) 500 ml flask clamps, (2) 1L flask clamps, (2) 2L flask clamps	30129	
Microplate/Deep-well plate	30175	5
10 ml Erlenmeyer Flask	30150BI	60
25 ml Erlenmeyer Flask	30151	60
50 ml Erlenmeyer Flask	30152BI	30
125 ml Erlenmeyer Flask	30153	13
250 ml Erlenmeyer Flask	30154BI	9
300 ml Erlenmeyer Flask	30155	7
500 ml Erlenmeyer Flask	30156BI	6
1L Erlenmeyer Flask	30157BI	4
2L Erlenmeyer Flask	30158	1
4L Erlenmeyer Flask	30159	1
6L Erlenmeyer Flask	30160	1
2500 ml Low Form Culture Flask	30161	1
2800 ml Fernbach Flask	30162	1
Test Tube Racks – Full Size		
10-13 mm, red, 6 x 12 array	30180BI	3
14-16 mm, orange, 6 x 12 array	30182¹	2
17-20 mm, white, 4 x 10 array	30184	3
21-25 mm, blue, 4 x 10 array	30186	2
26-30 mm, green, 3 x 8 array	30188²	2
Microcentrifuge, 1.5 ml, blue, 8 x 12 array	30190	2
Test Tube Racks – Half Size		
10-13 mm, red, 6 x 6 array	30181	6
14-16 mm, orange, 6 x 6 array	30183¹	4
17-20 mm, white, 4 x 5 array	30185	4
21-25 mm, blue, 4 x 4 array	30187	4
26-30 mm, green, 3 x 3 array	30189²	6
Microcentrifuge, 1.5 ml, blue, 4 x 6 array	30191	4

¹Fits 15 ml centrifuge tubes. ²Fits 50 ml centrifuge tubes



DEDICATED PLATFORMS WITH CLAMPS

Clamps come installed to provide maximum capacity

Platform Size	Description	Capacity	Model No.
11 x 13" (28 x 33 cm)	10 ml Erlenmeyer Flask	63	3540-1
	25 ml Erlenmeyer Flask	32	3540-2
	50 ml Erlenmeyer Flask	32	3540-3
	125 ml Erlenmeyer Flask	16	3540-4
	250 ml Erlenmeyer Flask	9	3540-5
	300 ml Erlenmeyer Flask	8	3540-6
	500 ml Erlenmeyer Flask	6	3540-7
	1L Erlenmeyer Flask	4	3540-8
	2L Erlenmeyer Flask	2	3540-9
	10 ml Beaker	76	3540-35
	20 ml Beaker	52	3540-36
	30 ml Beaker	52	3540-37
	100 ml Beaker	22	3540-38
	Utility Tray	–	3540-46
	Basket Platform with Retainer Springs	–	3540-49

OPTIONAL ACCESSORIES

	Model No.
Cooling Coil Needed for near-ambient temperature and below	SHK7000-37³
Gable Cover Stainless-steel gable cover for temperatures up to 90°C Plexiglas® gable cover for temperatures up to 65°C	SHK7000-30 SHK7000-32
Auxiliary Platform Suspension Arms Used for rapid platform changes	SHK7000-40
Movable Dolly For under lab bench operation	SHK7000-45
Mobile Cart	SHK7000-48

³This accessory requires a circulating chiller



Exceeding Your Expectations...

With exceptional innovation, reliability and accuracy, Thermo Scientific shakers are the optimal choice for your busy lab. We offer the safety features you need and the performance you expect.

Thermo Scientific Nalgene Shaker Flasks are ideal for suspension culture, media preparation and storage. For further information visit www.nalgenelabware.com.



© 2010 Thermo Fisher Scientific Inc. All rights reserved. All trademarks are the property of Thermo Fisher Scientific Inc. and its subsidiaries. Specifications, terms and pricing are subject to change. Not all products are available in all countries. Please consult your local sales representative for details. Sensaphone® is a registered trademark of PHONETICS, INC. Plexiglas® is a registered trademark of Altuglas International, ARKEMA Group in North America and Evonik Industries in Europe.

North America: USA/Canada +1 866 984 3766 (866-9-THERMO)

www.thermoscientific.com/shakers

Europe: Austria +43 1 801 40 0, Belgium +32 53 73 42 41, France +33 2 2803 2180, Germany national toll free 08001-536 376, Germany international +49 6184 90 6940, Italy +39 02 02 95059 434-254-375, Netherlands +31 76 571 4440, Nordic/Baltic countries +358 9 329 100, Russia/CIS +7 (812) 703 42 15, Spain/Portugal +34 93 223 09 18, Switzerland +41 44 454 12 12, UK/Ireland +44 870 609 9203

Asia: China +86 21 6865 4588 or +86 10 8419 3588, India toll free 1800 22 8374, India +91 22 6716 2200, Japan +81 45 453 9220,

Other Asian countries +852 2885 4613 **Countries not listed:** +49 6184 90 6940 or +33 2 2803 2180

BRSHMAXQ 0310

Thermo
SCIENTIFIC