

ILab 650

Clinical Chemistry
Critical Care
Haemostasis
Information Systems



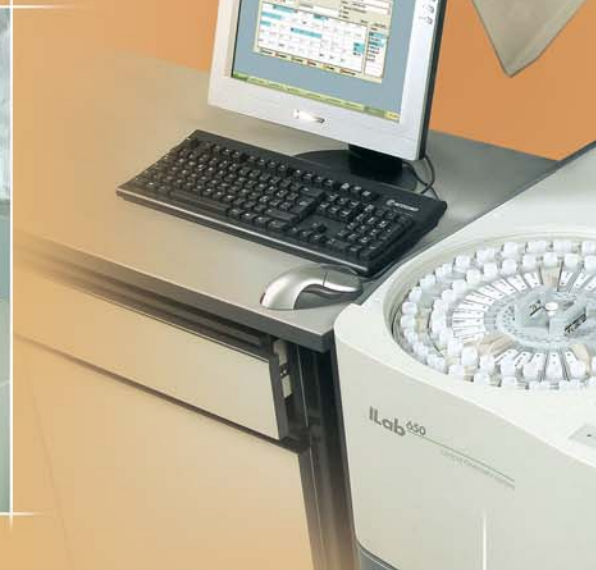
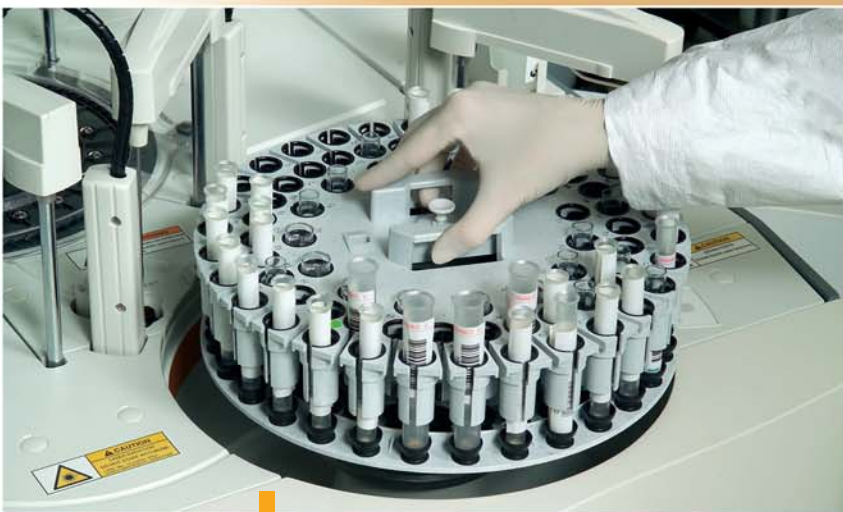
The power of proven technology

The power of

Test Consolidation

The ILab 650 offers you the higher number of active tests on board within the mid size range of Chemistry Analyzers.

96 reagents on board + ISE
Comprehensive 100 test menu memory
One reagent tray for all tests.



Flexibility

Cups and different size tubes can be easily accommodated in the universal sample tray. 75 positions mostly barcoded for routine samples, STAT, standards and controls... Samples are on board, let the ILab take over.



Productivity

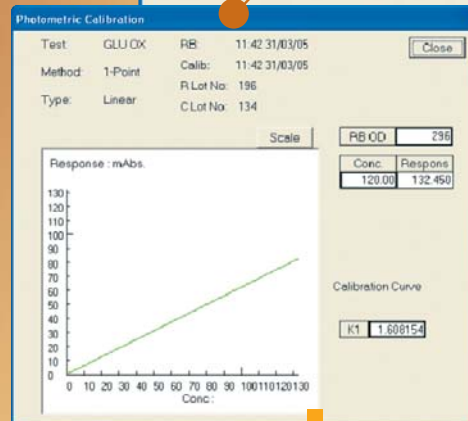
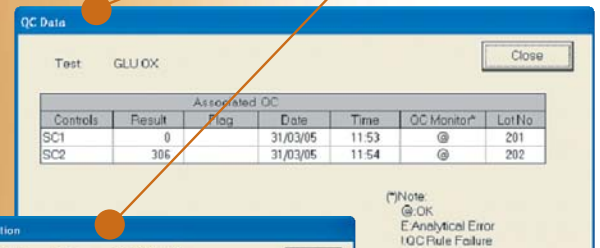
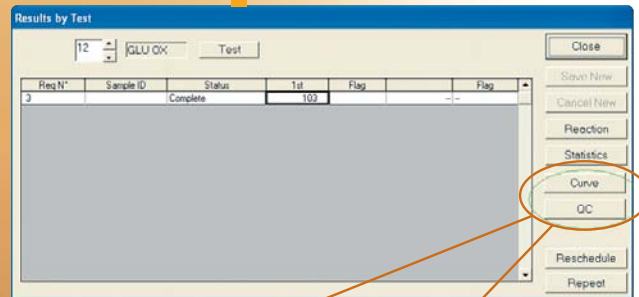
The ILab 650 offers you the highest "productivity to size ratio": a powerful maximum throughput of 800 test per hour (400 photometric+400 ISE), a fast turnaround of STAT samples and all results handled in real time.

proven technology



Ease of Use

The Windows XP based software platform provides easy access to all the system features. An intuitive user interface gives a clear guide through the operating functions and provides a comprehensive data management.



Traceability

ILab 650 can manage multiple lot numbers of reagents, calibrators and control material. Each patient result can be tracked to:

- The relative QC result
- The associated calibration curve
- The lots of reagent, calibrator and control material used.

This conforms well with the Good Laboratory Practices requirements.

proven technology



Quality Results

IL reagents have been developed and validated for use on ILab systems; this allows us to guarantee a high level of analytical performance. IL manufacturing applies state of the art quality system which ensures production of the highest quality reagents.



Methods

IL offers a comprehensive menu that includes reagents, calibrators and controls for a wide range of applications covering routine chemistries, specific proteins, rheumatology, drugs of abuse & therapeutic drug monitoring...

ROUTINE CHEMISTRY

Test	Method	Cat. No.	Kit Configuration	Tests/Kit	Calibrators	Formulation
Acid Phosphatase (Total & Non Prostatic)	α -naphthylphosphate	00018252040	5x20(T)+5x20(NP) mL	950	Factor	Dry
Acid Phosphatase (Total & Non Prostatic)	α -naphthylphosphate	00018482300	5x6(T)+5x6(NP) mL	285	Factor	Dry
Albumin	Bromocresol Green	00018250040	5x95 mL	1935	ReferriL G	Liquid
Alkaline Phosphatase	IFCC	00018252140	4x60 mL	1408	Factor	Liquid
ALT/GPT	IFCC	00018252340	3x90+6x21 mL	3150	Factor	Dry
ALT/GPT	IFCC	00018252240	10x20+10x11 mL	2750	Factor	Dry
Amylase	CNP-Maltotrioxide	00018255340	10x20 mL	1000	Factor	Liquid
AST/GOT	IFCC	00018252540	3x90+6x21 mL	3151	Factor	Dry
AST/GOT	IFCC	00018252440	10x20+10x11 mL	2750	Factor	Dry
Calcium	o-cresolphthalein	00018250340	5x100+5x100 mL	2630	ReferriL G	Liquid
Cholesterol	Chol. Esterase Chol. Oxidase / Trinder	00018250540	5x50 mL	2500	ReferriL G	Liquid
Cholinesterase	BTC	00018254340	4x90+2x90	2768	Factor	Dry
CK	SCE	00018253040	6x18+3x8 mL	720	Factor	Dry
CK	IFCC	00018482100	8x10+4x5 mL	444	Factor	Liquid
CK-MB	Immuno-inhibition	00018482200	6x10+6x2.5 mL	333	Factor	Liquid
Creatinine	Jaffe	00018250640	10x50+10x50 mL	5260	ReferriL G	Liquid
Creatinine	Jaffe	00018255540	10x20+10x20 mL	2100	ReferriL G	Liquid
Direct Bilirubin	Modified Jendrassik-Grof	00018254740	4x90+4x74+2x6.5 mL	3028	ReferriL G	Liquid
γ -GT	IFCC	00018254240	4x90 mL	2480	Factor	Dry
Glucose Hexokinase	Glucose Hexokinase	00018250740	8x90 mL	3424	ReferriL G	Liquid
Glucose Oxidase	Glucose Oxidase/Trinder	00018250840	5x95 mL	3165	ReferriL G	Liquid
HDL Cholesterol	Direct Homogeneous	00018255740	2x60+2x20 mL	444	ReferriL HDL	Liquid
Iron	Ferene	00018255040	4x90+2x15 mL	1440	ReferriL G	Liquid
LDH-P	Pyruvate-lactate	00018254940	4x90+4x20 mL	1776	Factor	Liquid
LDL Cholesterol	Direct Homogeneous	00018256040	4x18+4x6 mL	266	ReferriL LDL	Liquid
Lipase	Colorimetric, kinetic	00018254440	6x10+2x10+1x3 mL	306	Lipase calibrator (kit inslued)	Liquid
Magnesium	Xilidyl Blue	00018256240	5x20 mL	285	ReferriL G	Liquid
Phosphorus	Phosphomolybdate Complex	00018251240	5x45+5x45 mL	1500	ReferriL G	Liquid
Phosphorus	Phosphomolybdate Complex	00018481900	6x10+6x10 mL	400	ReferriL G	Liquid
Total Bilirubin	Modified Jendrassik-Grof	00018254640	4x100+4x74+2x6.5 mL	2884	ReferriL G	Liquid
Total Protein	Biuret	00018251440	5x100 mL	2380	ReferriL G	Liquid
Triglycerides	GPO/Trinder	00018255640	5x100 mL	1850	ReferriL G	Liquid
Urea	Urease/GLDH	00018255440	8x100 mL	2960	ReferriL G	Liquid
Uric Acid	Uricase/Trinder	00018251740	5x90 mL	2500	ReferriL G	Dry

IMMUNODIAGNOSTIC

Test	Method	Cat. No.	Kit Configuration	Tests/Kit	Calibrators	Formulation
Quantex α 1 Acid Glycoprotein	Immunoturbidimetric	T3000-2179	1x100+1x4 mL	200	Protein standard	Liquid
Quantex α 1 Antitrypsin	Immunoturbidimetric	T3000-2306	1x35+2x4 mL	160	Protein standard	Liquid
Quantex ASO	Latex-immunoturbidimetry	T3000-2304	1x90+2x6 mL	200	ASO Standard	Liquid
Quantex β 2 Microglobulin	Immunoturbidimetric	T3000-2307	1x40+4x3 mL	200	β -2 Microglobulin standard	Liquid
Quantex C3	Immunoturbidimetric	T3000-2308	1x60+4x12 mL	240	Protein standard	Liquid
Quantex C4	Immunoturbidimetric	T3000-2309	1x60+4x12 mL	240	Protein standard	Liquid
Quantex CRP (1 Point & Multipoint calib)	Latex-immunoturbidimetry	T3000-2209	1x80+4x10 mL	248	CRP Standard	Liquid
Quantex CRP ultra sensitive	Latex-immunoturbidimetry	T3000-2297	1x13+1x13 mL	104	CRPus Standard	Liquid
Quantex D-DIMER	Immunoturbidimetric	T3000-8501	2x13+2x3 mL	100	D-DIMER standard	Liquid
Quantex Ferritin	Latex-immunoturbidimetry	T3000-2271	1x100+3x7 mL	381	Ferritin standard	Liquid
Quantex Haptoglobin	Immunoturbidimetric	T3000-2305	1x35+2x3.5 mL	155	Protein standard	Liquid
Quantex HbA1c	Immunoturbidimetric	T3000-2314	1x50+1x28+1x14+1x14 mL	140	HbA1c standard	Liquid
Quantex IgA	Immunoturbidimetric	T3000-2268	1x90+4x16 mL	240	Protein standard	Liquid
Quantex IgE	Latex-immunoturbidimetry	T3000-2238	2x16+2x5 mL	116	IgE standard	Liquid
Quantex IgG	Immunoturbidimetric	T3000-2269	1x90+4x16 mL	240	Protein standard	Liquid
Quantex IgM	Immunoturbidimetric	T3000-2270	1x90+4x16 mL	304	Protein standard	Liquid
Quantex Lp(a)	Latex-immunoturbidimetry	T3000-2292	2x4+2x11 mL	122	Lp(a) standard	Liquid
Quantex Microalbumin	Immunoturbidimetric	T3000-2272	1x75+1x4 mL	200	Microalbumin standard	Liquid
Quantex Myoglobin	Latex-immunoturbidimetry	T3000-2247	2x12+2x6 mL	126	Myoglobin standard	Liquid
Quantex RF	Latex-immunoturbidimetry	T3000-2255	1x75+2x6 mL	300	RF Standard	Liquid
Quantex Rubella	Latex-immunoturbidimetry	T3000-2180	2x4+2x5 mL	80	Rubella standard	Dry
Quantex sTfR	Latex-immunoturbidimetry	T3000-2300	1x45+1x4 mL	160	sTfR standard	Liquid
Quantex Toxo	Latex-immunoturbidimetry	T3000-2181	2x3.5+2x14 mL	92	Toxo standard	Liquid
Quantex Transferrin	Immunoturbidimetric	T3000-2172	2x100+2x4 mL	400	Protein standard	Liquid

THERAPEUTIC DRUG MONITORING

Test	Method	Cat. No.	Kit Configuration	Tests/Kit	Calibrators	Formulation
Quantex Amikacin	Latex-immunoturbidimetry	T3000-2317	2x12.5+2x3.8 mL	84	Amikacin standard	Liquid
Quantex Carbamazepine	Latex-immunoturbidimetry	T3000-2277	2x11+2x3 mL	100	Carbamazepine standard	Liquid
Quantex Digoxin	Latex-immunoturbidimetry	T3000-2276	2x10.5+2x6.5 mL	200	Digoxin standard	Liquid
Quantex Digoxin	Latex-immunoturbidimetry	T3000-2275	2x9+2x6.5 mL	171	Digoxin standard	Liquid
Quantex Gentamicin	Latex-immunoturbidimetry	T3000-2281	2x12.5+2x3.8 mL	100	Gentamicin standard	Liquid
Quantex Phenobarbital	Latex-immunoturbidimetry	T3000-2278	2x14.5+2x4 mL	100	Phenobarbital standard	Liquid
Quantex Phenytoin	Latex-immunoturbidimetry	T3000-2279	2x14.5+2x4 mL	100	Phenytoin standard	Liquid
Primidone	Enzyme immunoassay	W150291	1x25+1x8 mL	100	Primidone calibrator	Liquid
Quantex Theophylline	Latex-immunoturbidimetry	T3000-2282	2x15+2x2.5 mL	100	Theophylline standard	Liquid
Quantex Valproic Acid	Latex-immunoturbidimetry	T3000-2280	2x15+2x3.8 mL	150	Valproic Acid standard	Liquid

DRUGS OF ABUSE

Test	Method	Cat. No.	Kit Configuration	Tests/Kit	Calibrators	Formulation
Amphetamines	Immunoassay	W150017	1x100+1x100 mL	952	Negative, Multi drug calibrators	Liquid
Barbiturate	Immunoassay	W150225	1x100+1x100 mL	952	Negative, Multi drug calibrators	Liquid
Benzodiazepine	Immunoassay	W150039	1x100+1x100 mL	952	Negative, Multi drug calibrators	Liquid
Cannabinoid	Immunoassay	W150185	1x100+1x100 mL	952	Cannabinoid Calibrators	Liquid
Cocaine Metabolite	Immunoassay	W150055	1x100+1x100 mL	952	Negative, Multi drug calibrators	Liquid
Cotinine	Immunoassay	W150394	1x100+1x100 mL	952	Cotinine Calibrator	Liquid
Ecstasy	Immunoassay	W15100075	1x100+1x100 mL	952	Ecstasy Calibrators	Liquid
Ethyl Alcohol	Immunoassay	W150037	1x100+1x100 mL	952	Ethyl Calibrators	Liquid
Methadone	Immunoassay	W150596	1x100+1x100 mL	952	Negative, Multi drug calibrators	Liquid
Methaqualone	Immunoassay	W150514	1x100+1x100 mL	952	Ecstasy Calibrators	Liquid
Opiate	Immunoassay	W150135	1x100+1x100 mL	952	Negative, Multi drug calibrators	Liquid
Phenciclidine	Immunoassay	W150160	1x100+1x100 mL	952	Negative, Multi drug calibrators	Liquid
Propoxyphene	Immunoassay	W150037	1x100+1x100 mL	952	Negative, Multi drug calibrators	Liquid

Technical Specifications

Tests on line	Up to 99
Programmable tests	100 photometric, 3 ISE, 3 serum index, 20 calculated
Throughput, test per hour	400 photometric + 400 ISE
Measuring methods	End point, fixed time and kinetic
Sample loading	Up to 75 sample containers in the tray
Sample container	Primary tubes and cups
Sample volume	From 2 to 40 µL (step 1 µL)
Reagent dispensing	Direct pick-up method
Number of reagents on board	Up to 96, refrigerated
Reagent containers	10, 20, 25, 50 and 100 mL bottles
Reagent volume	From 20 to 400 µL (step 5 µL) for reagents 1, 2, 3 and 4
Total volume of reaction	From 180 to 400 µL
Reaction cuvettes	81 permanent Pyrex® glass, 5 mm optical pathlength
Reaction time and photometric readings	9.6 min, 33 data points (up to 2-reagent tests) - 21.8 min, 74 data points (up to 4-reagent tests)
Photometric system	Direct photometry, stationary photometric unit, rotating cuvettes
Available wavelenghts	12 wavelenghts ranging from 340 to 850 nm, holographic gating and photodiode array
Signal output	Bi-direccional RS-232 interface integral to the system
ISE channels	Sodium, Potassium, Chloride
ISE measuring technique	Indirect potentiometry, sample dilution ratio 1 : 21.7
ISE electrodes	Single channel, maintenance free
ISE calibration	Automatic internal periodic calibration

Installation Requirements

Power requirement	120 - 230 V ± 10 %, 50/60 Hz, 2 KVA
Power consumption	1.6 KVA
Ambient temperature/humidity	15 - 30 °C, 45 - 85 % RH non condensing
Dimensions / Weight	98 W x 76 D x 118 H cm / 300 Kg
Purified water supply inlet	Max 24 liters/hour, 0.5 to 3.5 kg/cm ² of pressure

Worldwide Locations

**Instrumentation Laboratory
Corporate Headquarters**
Barcelona, Spain
Tel. +34-93-4010101
www.ilwww.com

**US, Canada, Latin America
Headquarters**
Lexington, MA, U.S.A.
Tel. +1-781-861-0710

Mexico
Colonia Juarez
Tel. +52-5-525-8639

USA
Lexington, MA
Tel. +1-781-861-0710
www.ilus.com

Pacific Headquarters
Minato-ku, Tokyo, Japan
Tel. +81-3-3437-6350

Hong Kong
Hong Kong
Tel. +852-27927773

Japan
Minato-ku, Tokyo
Tel. +81-3-3437-6350

**Europe, Middle East,
Africa Headquarters**
Milano, Italy
Tel. +39-02-25221
www.il-italia.com

Austria
Wien
Tel. +43-1-2565800-0

Belgium
Zaventem
Tel. +32-2-7252052
www.il-be.com

Czech
Praha
Tel. +420-2-7816047

France
Paris
Tel. +33-1-53338600
www.il-france.fr

Germany
Kirchheim bei München
Tel. +49-89-909070
www.il-ger.de

Hungary
Budapest
Tel. +36-1-4527810

Italy
Milano
Tel. +39-02-25221
www.il-italia.it

Lithuania
Kaunas
Tel. +370-37-313157

Poland
Warszawa
Tel. +48-22-3361800

The Netherlands
Breda
Tel. +31-76-5480100
www.il-nl.com

United Kingdom
Warrington, Cheshire
Tel. +44-1925-81-0141

Instrumentation Laboratory on the Internet: www.ilwww.com

Applications/tests listed may not yet be approved by the regulatory authorities in your country.
Please contact the appropriate office above for specific information regarding availability in your country.
IL product specifications are subject to modification to assure the highest quality performance.
Some of the IL sites may still be in the process of completing ISO.

© Instrumentation Laboratory 2005