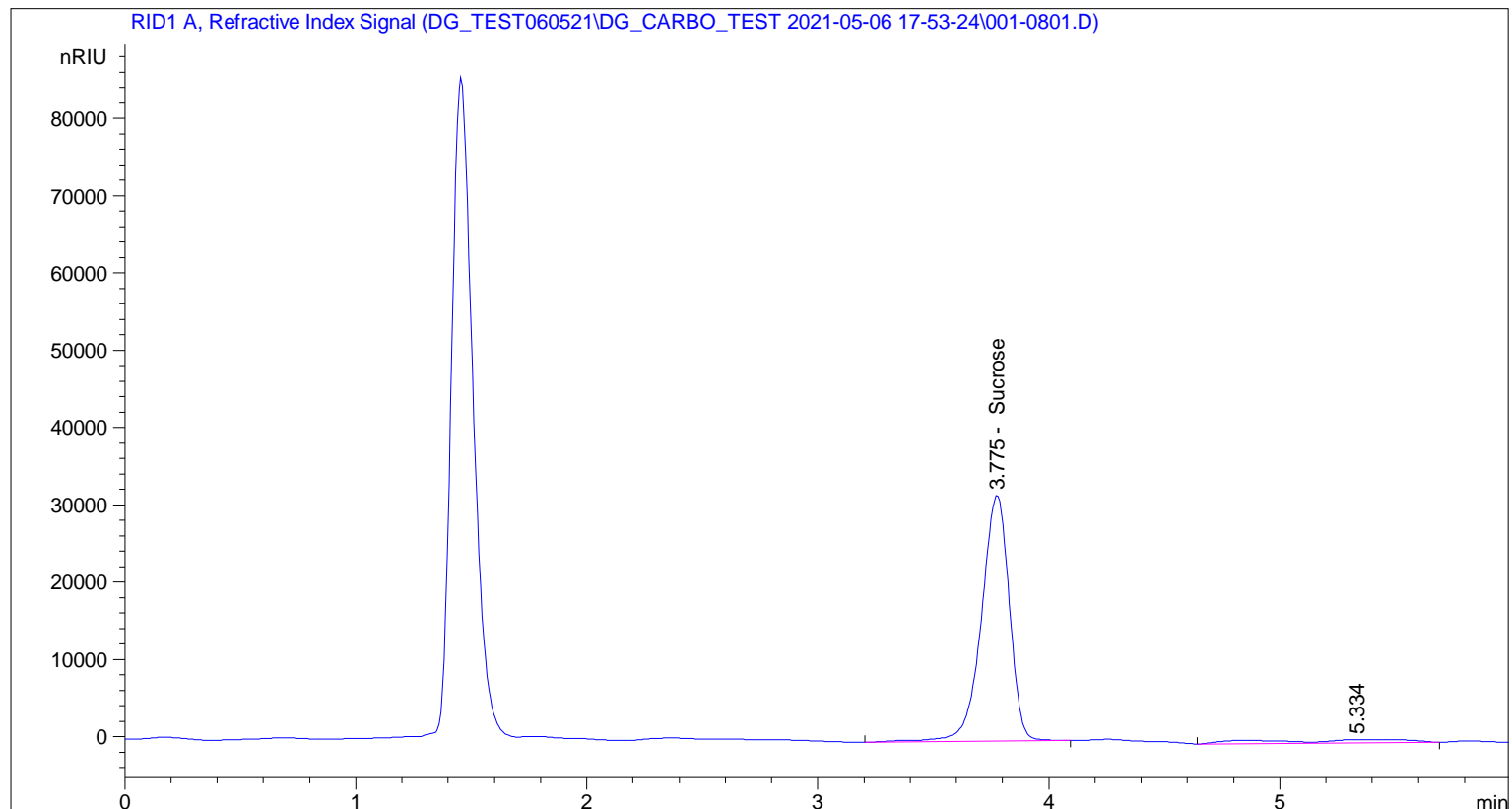


Sample Name: Test sample sucrose

```

=====
Acq. Operator   : DG                      Seq. Line :    8
Acq. Instrument : Instrument 1            Location  : Vial 1
Injection Date  : 5/6/2021 6:43:23 PM    Inj       :    1
                                           Inj Volume: 3.0 µl
Different Inj Volume from Sequence !    Actual Inj Volume : 4.0 µl
Acq. Method    : C:\CHEM32\1\DATA\DG_TEST060521\DG_CARBO_TEST 2021-05-06 17-53-24\DG_CARBO.M
Last changed   : 5/6/2021 6:07:24 PM by DG
                                           (modified after loading)
Analysis Method : C:\CHEM32\1\METHODS\DG_CARBO.M
Last changed   : 5/20/2021 3:43:30 PM by DG
Method Info    : Sucrose method with RI detection and Agilent Zorbax Carbohydrate column
    
```



External Standard Report

```

Sorted By      : Signal
Calib. Data Modified : 5/20/2021 3:39:54 PM
Multiplier:    : 1.0000
Dilution:      : 1.0000
Do not use Multiplier & Dilution Factor with ISTDs
    
```

Signal 1: RID1 A, Refractive Index Signal

RetTime [min]	Type	Area [nRIU*s]	Amt/Area [mg/ml]	Amount	Grp Name
3.775	BB	2.68526e5	4.51945e-5	12.13591	Sucrose

Totals : 12.13591

Sample Name: Test sample sucrose

=====  
\*\*\* End of Report \*\*\*