

Instrument Information

MS Model	G6550A	Run Date	03:26:21 12:04:37
Serial Number	SG1436B001	Firmware Rev	14.723
Instrument Mode	Extended Dynamic Range (2GHz)	Slicer Mode	High Resolution (Position: 6)
Mass Range	Standard (3200 m/z)	Source Type	Dual AJS ESI
Ion Polarity	Negative		
Data Path	C:\MassHunter\Tune\QTOF\Reports\Q-TOFSystemTune_Negative_20210326_120437\Q-TOFSystemTune_Negative_20210326_120437.tun		

Negative Polarity Results

Quad Results

Wide

Width Target	9.00	Mass Tolerance	1.00	Width Tolerance	1.00
m/z Target	Mass Delta	Width Delta	Efficiency (%)	Score	Result
302.00	0.31	-0.14	90	87	Passed
2233.91	0.27	0.21	85	87	Passed
Width Gain		1881	Width Offset		678
Mass Gain		1210	Mass Offset		2789
Isolation Efficiency		88	Score		87
Result		Passed			

Medium

Width Target	4.00	Mass Tolerance	.50	Width Tolerance	.50
m/z Target	Mass Delta	Width Delta	Efficiency (%)	Score	Result
302.00	0.16	0.13	83	83	Passed
2233.91	-0.03	0.14	75	91	Passed
Width Gain		1890	Width Offset		1493
Mass Gain		1209	Mass Offset		2438
Isolation Efficiency		79	Score		87
Result		Passed			

Narrow

Width Target	1.30	Mass Tolerance	.15	Width Tolerance	.15
m/z Target	Mass Delta	Width Delta	Efficiency (%)	Score	Result
302.00	0.01	0.03	69	95	Passed
2233.91	0.07	0.02	40	78	Passed
Width Gain		1906	Width Offset		1935
Mass Gain		1212	Mass Offset		2228
Isolation Efficiency		54	Score		84
Result		Passed			

Lens 2

Lens 2 Phase	108.0					
Mass	113.0	302.0	1034.0	1633.9	2233.9	2833.9
RF Voltage	.0	59.6	173.5	248.5	282.8	325.2
DC Voltage	-4.8	-20.7	-14.7	-8.1	-2	-2

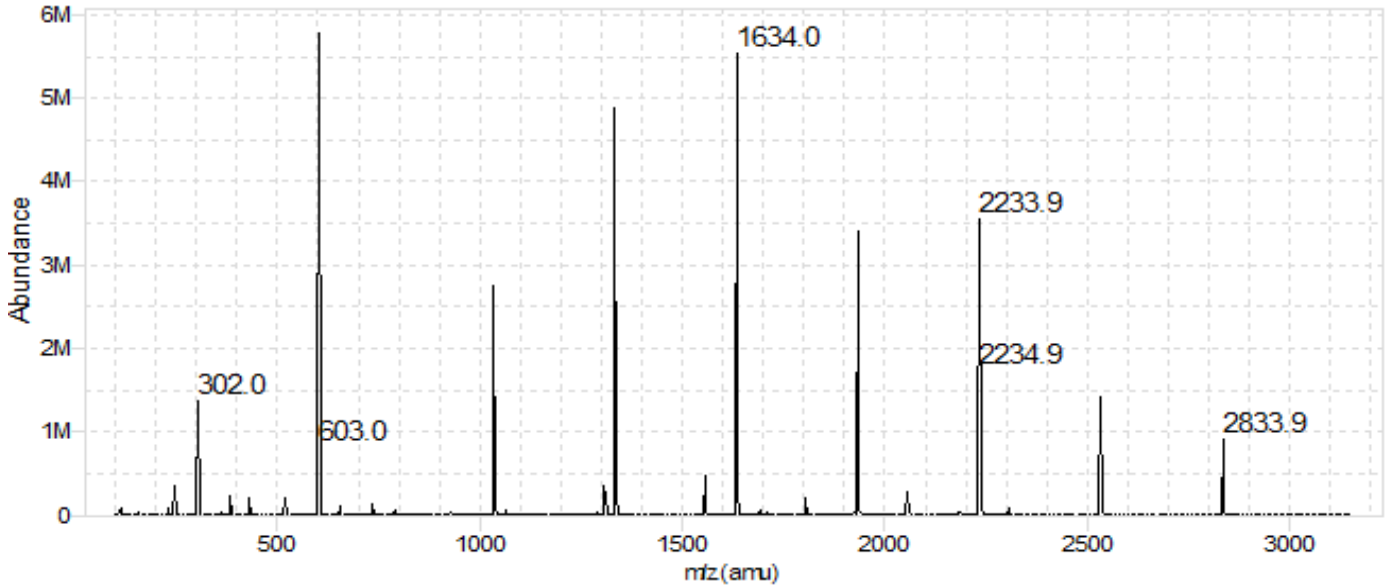
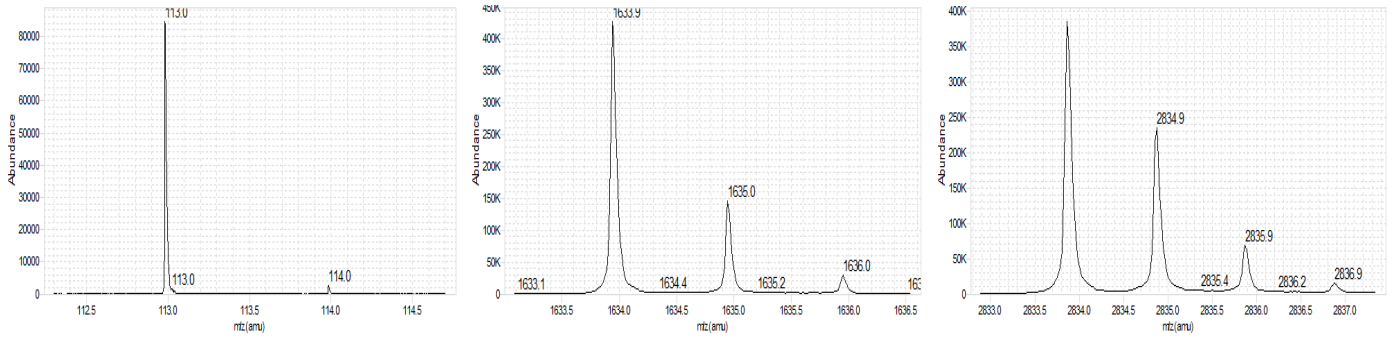
Total Ion

Quad AMU	126.4
-----------------	-------

Quad Overall

Overall Score	86	Overall Result	Passed
----------------------	----	-----------------------	--------

TOF Results



TOF Mass Calibration Data

Theoretical	Actual	Time	Abundance	Calibration Abundance	Resolution	Primary Residuals	Corrected Residuals
112.985587	112.985587	31.751353	92,615	92,266	11,147	-1.41	0.00
301.998139	301.998145	51.266746	1,406,144	386,606	16,955	1.57	0.02
601.978977	601.978948	71.963493	5,816,168	396,259	20,751	1.63	-0.05
1033.988109	1033.988175	93.999840	2,946,921	470,900	25,564	1.00	0.06
1333.968947	1333.968927	106.630551	4,975,329	434,152	27,676	0.39	-0.01
1633.949786	1633.949752	117.904310	5,870,832	436,935	29,039	-0.14	-0.02
1933.930624	1933.930548	128.182519	3,472,559	422,938	30,263	-0.62	-0.04
2233.911463	2233.911611	137.689977	3,610,704	441,212	30,715	-0.84	0.07
2533.892301	2533.892237	146.577781	1,472,827	398,154	32,319	-0.98	-0.03
2833.873139	2833.873141	154.953333	948,246	389,161	32,751	-0.60	0.00

Setpoints

Source Settings			
Gas Temperature	225	Drying Gas	13.0
Nebulizer Pressures	20	Capillary	4000
Sheath Gas Temperature	275	Sheath Gas Flow	12.0
Nozzle Voltage	2000		
Source Actuals			
Gas Temperature	225	Drying Gas	13.1
Nebulizer Pressures	20	Capillary	3992
Cap Current	5.219	Chamber Current	5.33
Ion Funnel			
Funnel DC	-50.0	HP Funnel dV	-150.0
HP Funnel RF	200.0	LP Funnel dV	-100.0
LP Funnel RF	100.0		
Optics 1			
Fragmentor	-360	Oct 1 RF Vpp	750
Oct 1 DC	-27.8	Lens 1	-26.3
Lens 2	-16.0	Lens 2 RF Enable	1
Lens 2 RF Voltage	0	Lens 2 RF Phase	108
Quad			
TTI Quad AMU	126.4	Quad DC	-24.3
Post Filter DC	-24.2		
Cell			
Collision Cell Gas Flow	22.0	Hex RF	550
Hex DC	-21.7	Hex Delta	7.0
Cell Entrance	-23.2	Hex 2 RF	600
Hex 2 DC	-14.7	Hex 2 DV	1.0
Optics 2			
Ion Focus	-7.4	Extractor DC	8.4
Lens 3	60.4	Bottom Slit	41.35
Top Slit	41.70	Hex 3 DC	-13.5
TOF			
Pusher	-1200	Pusher Offset	0
Puller	700	Puller Offset	-39
Acc Focus	1950	Front Mirror	7000
Mid Mirror	1667.3	Back Mirror	-1250
Minimum Mass	100	Maximum Mass	3200
Acquisition Rate	1.0	Acquisition Time	1000
#Transients / Spectrum	5904	Acq Hold Off Delay (ns)	20000
Detector			
MCP	769	PreAmpOffset	29841
Low Gain PreAmpOffset	33595	Gain Abund Ratio	12.0
Gain T0 Offset	-0.088		
Vacuum And Temperatures			
Quad Temp	100	Rough Vac	2.54E+00
Quad Vac	3.20E-05	TOF Vac	4.89E-07
Turbo 1 Speed	100.0	Turbo 1 Power	132
Turbo 2 Speed	99.4	Turbo 2 Power	33

TOF Mass Calibration Coefficients

a	3458.115E-04	t0	1013.621E-03	a2	-2789.920E-09
b2	1561.529E-10	c2	-3156.375E-12	d2	3146.570E-14
e2	-1584.930E-16	f2	3202.984E-19	Term Flag	0x00FC
Trad	1	Poly	6		